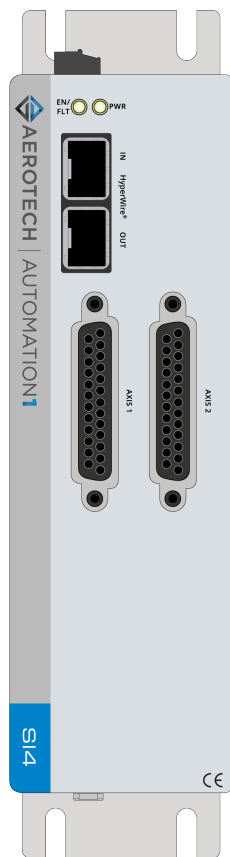


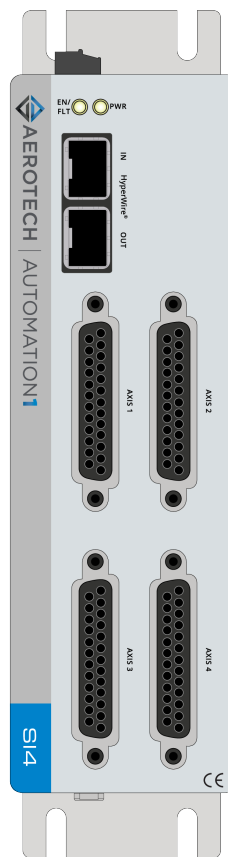
Automation1 SI4 Stepper Controller

HARDWARE MANUAL

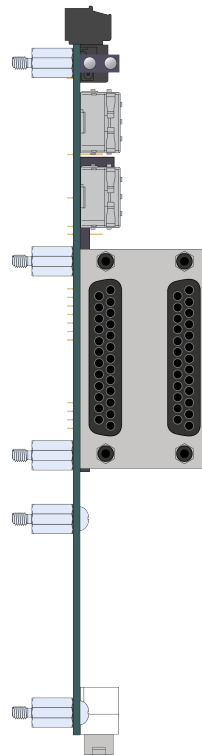
Revision 1.10



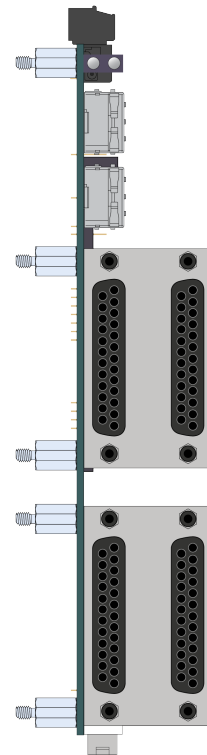
SI4-2P1



SI4-4P1



SI4-2P2



SI4-4P2

GLOBAL TECHNICAL SUPPORT

Go to the [Global Technical Support Portal](#) for information and support about your Aerotech, Inc. products. The website supplies software, product manuals, Help files, training schedules, and PC-to-PC remote technical support. If necessary, you can complete Product Return (RMA) forms and get information about repairs and spare or replacement parts. To get help immediately, contact a service office or your sales representative. Include your customer order number in your email or have it available before you call.

This manual contains proprietary information and may not be reproduced, disclosed, or used in whole or in part without the express written permission of Aerotech, Inc. Product names mentioned herein are used for identification purposes only and may be trademarks of their respective companies.

Copyright © 2020-2024, Aerotech, Inc., All rights reserved.



Table of Contents

Automation1 SI4 Stepper Controller	1
Table of Contents	3
List of Figures	4
List of Tables	5
EU Declaration of Conformity	6
UKCA Declaration of Conformity	7
Korean Certification	8
Safety Procedures and Warnings	9
Handling and Storage	11
Installation Overview	12
Chapter 1: SI4 Overview	15
1.1. Feature Summary	17
1.2. Ordering Options	17
1.3. Functional Block Diagram	18
1.4. Electrical Specifications	18
1.5. Mechanical Specifications	19
1.5.1. Mounting and Cooling	19
1.5.2. Dimensions	20
1.5.3. DIN Rail Mounting	24
1.5.4. OEM Mounting	25
1.6. Environmental Specifications	26
1.7. Drive and Software Compatibility	26
Chapter 2: Installation and Configuration	27
2.1. Input Power Connections	27
2.1.1. Control Supply Connector	27
2.1.2. Minimizing Noise for EMC/CE Compliance	28
2.2. Axis Connector	29
2.2.1. Stepper Clock and Stepper Direction Signals	30
2.2.2. End of Travel Limits	32
2.2.2.1. End of Travel Limit Phasing	33
2.2.3. Amplifier Fault Inputs	34
2.2.4. Amplifier Enable Output	35
2.2.5. Primary Encoder Inputs	36
2.2.5.1. Square Wave Encoder	37
2.2.5.2. Absolute Encoder	38
2.2.5.3. Encoder Phasing	39
2.2.5.4. Stepper Motor Phasing	40
2.3. Digital I/O Connector	41
2.3.1. Digital Outputs	42
2.3.2. Digital Inputs	45
2.3.3. High-Speed User Input	47
2.4. HyperWire Interface	48
2.5. System Interconnection	49
2.6. PC Configuration and Operation Information	50
Chapter 3: Maintenance	51
3.1. Preventative Maintenance	52
Appendix A: Warranty and Field Service	53
Appendix B: Revision History	55
Index	57

List of Figures

Figure 1-1:	SI4 Stepper Controller	15
Figure 1-2:	SI4-OEM Stepper Controller	16
Figure 1-3:	Functional Diagram	18
Figure 1-4:	Dimensions [-2P1 (Standard 2-Axis)]	20
Figure 1-5:	Dimensions [-4P1 (Standard 4-Axis)]	21
Figure 1-6:	Dimensions [-2P2 (OEM 2-Axis)]	22
Figure 1-7:	Dimensions [-4P2 (OEM 4-Axis)]	23
Figure 1-8:	Din Rail Clip Dimensions	24
Figure 2-1:	Control Supply Connections	27
Figure 2-2:	Stepper Clock and Stepper Direction Timing	30
Figure 2-3:	Stepper Clock and Stepper Direction Output Schematic	31
Figure 2-4:	End of Travel Limit Input Connections	32
Figure 2-5:	End of Travel Limit Input Schematic	32
Figure 2-6:	End of Travel Limit Input Diagnostic Display	33
Figure 2-7:	Fault Input Schematic	34
Figure 2-8:	Amplifier Enable Output Schematic	35
Figure 2-9:	Square Wave Encoder Schematic (Axis Connector)	37
Figure 2-10:	Absolute Encoder Schematic (Axis Connector)	38
Figure 2-11:	Encoder Phasing Reference Diagram (Standard)	39
Figure 2-12:	Position Feedback in the Diagnostic Display	39
Figure 2-13:	Positive Motor Direction	40
Figure 2-14:	Digital Outputs Schematic	43
Figure 2-15:	Digital Outputs Connected in Current Sourcing Mode	44
Figure 2-16:	Digital Outputs Connected in Current Sinking Mode	44
Figure 2-17:	Digital Inputs Schematic	45
Figure 2-18:	Digital Inputs Connected to Current Sourcing (PNP) Devices	46
Figure 2-19:	Digital Inputs Connected to Current Sinking (NPN) Devices	46
Figure 2-20:	High-Speed Input	47
Figure 2-21:	Recommended System Connections	49

List of Tables

Table 1-1: Example Order and Ordering Options	17
Table 1-2: Electrical Specifications	18
Table 1-3: Mounting Specifications	19
Table 1-4: Mounting Parts	24
Table 1-5: OEM Mounting Parts	25
Table 1-6: Environmental Specifications	26
Table 1-7: Drive and Software Compatibility	26
Table 2-1: Control Supply Connector Pinout	27
Table 2-2: Control Supply Mating Connector Ratings	27
Table 2-3: Axis Connector Pinout	29
Table 2-4: Axis Mating Connector Ratings	29
Table 2-5: Clock and Direction Pins on the Axis Connector	30
Table 2-6: Stepper Clock and Stepper Direction Signal Output Specifications	30
Table 2-7: Stepper Direction Signal Output Polarity	30
Table 2-8: End of Travel Limit Pins on the Axis Connector	32
Table 2-9: Amplifier Fault Input Specifications	34
Table 2-10: Amplifier Enable Connector Pin on the Axis Connector	35
Table 2-11: Amplifier Enable Output Specifications	35
Table 2-12: Primary Encoder Pins on the Axis Connector	36
Table 2-13: Square Wave Encoder Specifications	37
Table 2-14: Absolute Encoder Specifications	38
Table 2-15: Digital I/O Connector Pinout	41
Table 2-16: Digital I/O Mating Connector Ratings [-EB1]	41
Table 2-17: Digital Output Specifications	42
Table 2-18: Digital Output Pins on Digital I/O Connector	42
Table 2-19: Digital Input Specifications	45
Table 2-20: Digital Input Pins on the Digital I/O Connector	45
Table 2-21: High-Speed Input Specifications	47
Table 2-22: High-Speed Input Pins on the Digital I/O Connector	47
Table 2-23: HyperWire Card Part Number	48
Table 2-24: HyperWire Cable Part Numbers	48
Table 2-25: LED Description	51
Table 2-26: Troubleshooting	51
Table 2-27: Preventative Maintenance	52

EU Declaration of Conformity

Manufacturer Aerotech, Inc.
Address 101 Zeta Drive
 Pittsburgh, PA 15238-2811
 USA
Product SI4
Model/Types All



This is to certify that the aforementioned product is in accordance with the applicable requirements of the following directive(s):

2014/30/EU	Electromagnetic Compatibility (EMC)
EU 2015/863	Directive, Restricted Substances (RoHS 3)

and has been designed to be in conformity with the applicable requirements of the following standard(s) when installed and used in accordance with the manufacturer's supplied installation instructions.

EN 55011:2000/A2:2003	Conducted and Radiated Emissions
EN 55022:1998	Conducted and Radiated Emissions

Authorized Representative:

/ Norbert Ludwig

Managing Director
 Aerotech GmbH
 Gustav-Weißkopf-Str. 18
 90768 Fürth
 Germany

Engineer Verifying Compliance

/ Alex Weibel

Aerotech, Inc.
 101 Zeta Drive
 Pittsburgh, PA 15238-2811
 USA

Date

5/31/2024

UKCA Declaration of Conformity

Manufacturer Aerotech, Inc.
Address 101 Zeta Drive
Pittsburgh, PA 15238-2811
USA
Product SI4
Model/Types All



To which this declaration relates, meets the essential health and safety requirements and is in conformity with the relevant UK Legislation listed below:

Electromagnetic Compatibility Regulations 2016
Hazardous Substances in Electrical and Electronic Equipment Regulations 2012

Using the relevant section of the following UK Designated Standards and other normative documents when installed in accordance with the installation instructions supplied by the manufacturer.

EN 55011:2000/A2:2003 Conducted and Radiated Emissions
EN 55022:1998 Conducted and Radiated Emissions

Authorized Representative:

A handwritten signature in black ink, appearing to read 'Simon Smith'.

/ Simon Smith

Managing Director
Aerotech Ltd
The Old Brick Kiln, Ramsdell, Tadley
Hampshire RG26 5PR
UK

Engineer Verifying Compliance

A handwritten signature in black ink, appearing to read 'Alex Weibel'.

/ Alex Weibel

Aerotech, Inc.
101 Zeta Drive
Pittsburgh, PA 15238-2811
USA

Date

5/31/2024

Korean Certification



Registration of Broadcasting and Communication Equipments

It is verified that the foregoing equipment has been registered under the Clause 3, Article 58-2 of the radio Waves Act.

Safety Procedures and Warnings

IMPORTANT: This manual tells you how to carefully and correctly use and operate the controller.



- Read all parts of this manual before you install or operate the controller or before you do maintenance to your system.
- To prevent injury to you and damage to the equipment, obey the precautions in this manual.
- All specifications and illustrations are for reference only and were complete and accurate as of the release of this manual. To find the newest information about this product, refer to www.aerotech.com.

If you do not understand the information in this manual, contact Aerotech Global Technical Support.



IMPORTANT: This product has been designed for light industrial manufacturing or laboratory environments. If the product is used in a manner not specified by the manufacturer:

- The protection provided by the equipment could be impaired.
- The life expectancy of the product could be decreased.

Safety notes and symbols are placed throughout this manual to warn you of the potential risks at the moment of the safety note or if you fail to obey the safety note.



The voltage can cause shock, burn, or death.



You are at risk of physical injury.
You could damage the controller.



A surface can be hot enough to burn you.



Your actions, the temperature of the system, or the condition of the atmosphere that surround the system could start a fire.



Components are sensitive to electrostatic discharge.



Unsecured cables could cause you to:

- trip and fall
- drag the product off of its mounting location
- damage the cable connections.



A blue circle symbol is an action or tip that you should obey. Some examples include:

- General tip
- Read the manual/section
- Wear protective safety equipment (eye protection, ear protection, gloves)
- If applicable, do not lift unassisted



WARNING: To prevent damage to the equipment and decrease the risk of electrical shock and injury, obey the precautions that follow.



1. Supply each operator with the necessary protection from live electrical circuits.
2. Install the necessary precautions to supply safety and protection to the operator.
3. Do not connect or disconnect electrical components, wires, and cables while this product is connected to a power source.
4. Before you connect wires to this product, disconnect the electrical power.
5. Make sure that all components are grounded correctly and that they obey the local electrical safety requirements.
6. Before you do maintenance to the equipment, disconnect the electrical power.
7. Make sure that all system cables are correctly attached and positioned.
8. Do not use the cables or the connectors to lift or move this product.
9. Use this product only in environments and operating conditions that are approved in this manual.
10. Only trained operators should operate this equipment.

Handling and Storage

Unpacking the controller



IMPORTANT: All electronic equipment and instrumentation is wrapped in antistatic material and packaged with desiccant. Ensure that the antistatic material is not damaged during unpacking.

Inspect the shipping container for any evidence of shipping damage. If any damage exists, notify the shipping carrier immediately.

Remove the packing list from the shipping container. Make sure that all the items specified on the packing list are contained within the package.

The documentation for the controller is on the included installation device. The documents include manuals, interconnection drawings, and other documentation pertaining to the system. Save this information for future reference. Additional information about the system is provided on the Serial and Power labels that are placed on the chassis.

The system serial number label contains important information such as the:

- Customer order number (please provide this number when requesting product support)
- Drawing number
- System part number

Handling



IMPORTANT: It is the responsibility of the customer to safely and carefully lift and move the controller.

- Be careful when you move or transport the controller.
- Refer to [Section 1.5. Mechanical Specifications](#) for dimensions and weight specifications.
- Retain the shipping materials for future use.
- Transport or store the controller in its protective packaging.



WARNING: Electrostatic Discharge (ESD) Sensitive Components!

You could damage the power supply or drives if you fail to observe the correct ESD practices. Wear an ESD wrist strap when you handle, install, or do service to the system assembly.

Storage

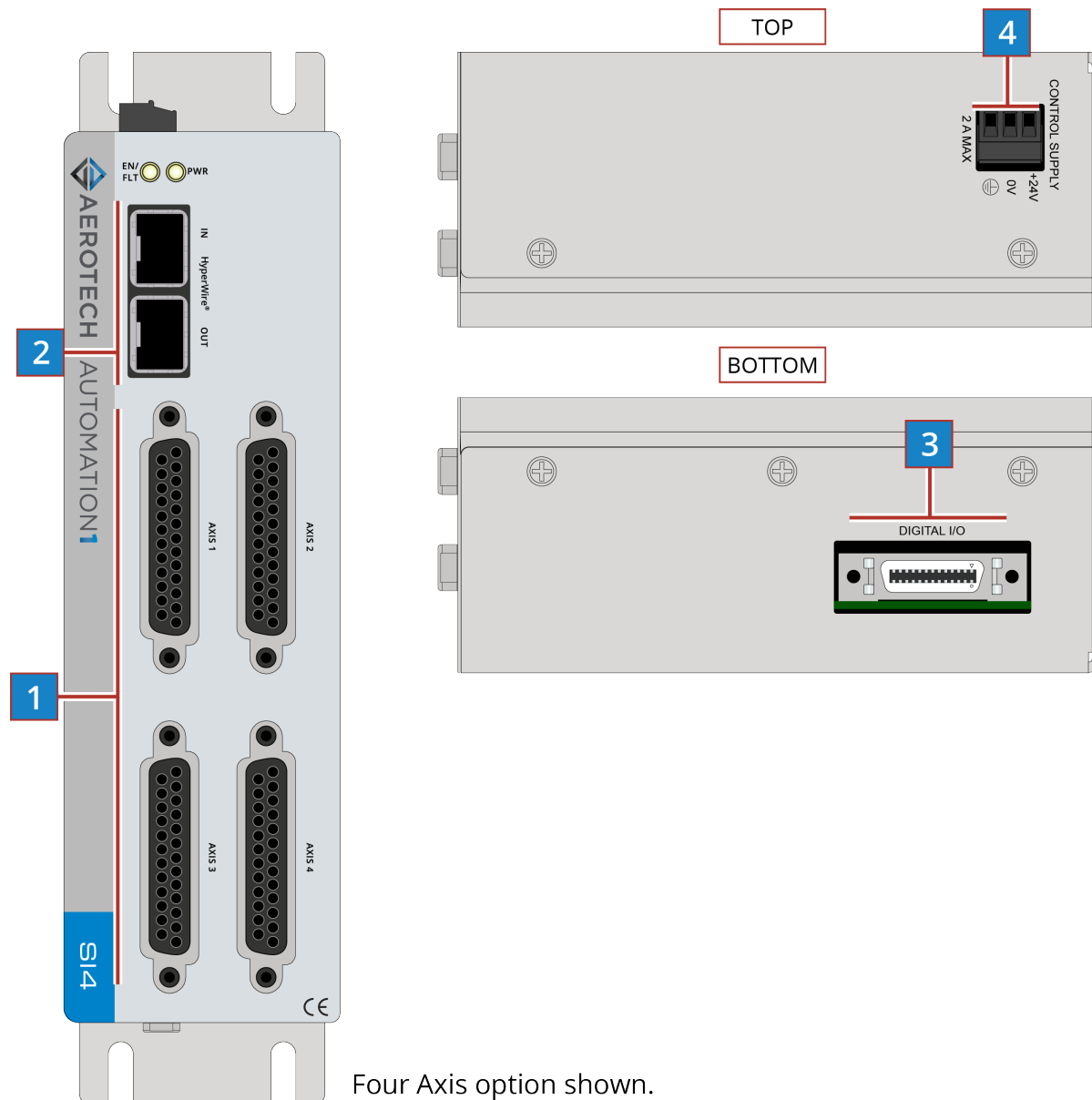
Store the controller in the original shipping container. If the original packaging included ESD protective packaging, make sure to store the controller in it. The storage location must be dry, free of dust, free of vibrations, and flat.

Refer to [Section 1.6. Environmental Specifications](#).

Installation Overview

The images that follow show the order in which to make connections and settings that are typical to the SI4. If a custom interconnect drawing was supplied with your system, that drawing is on your Storage Device and shows as a line item on your Sales Order in the Integration section.

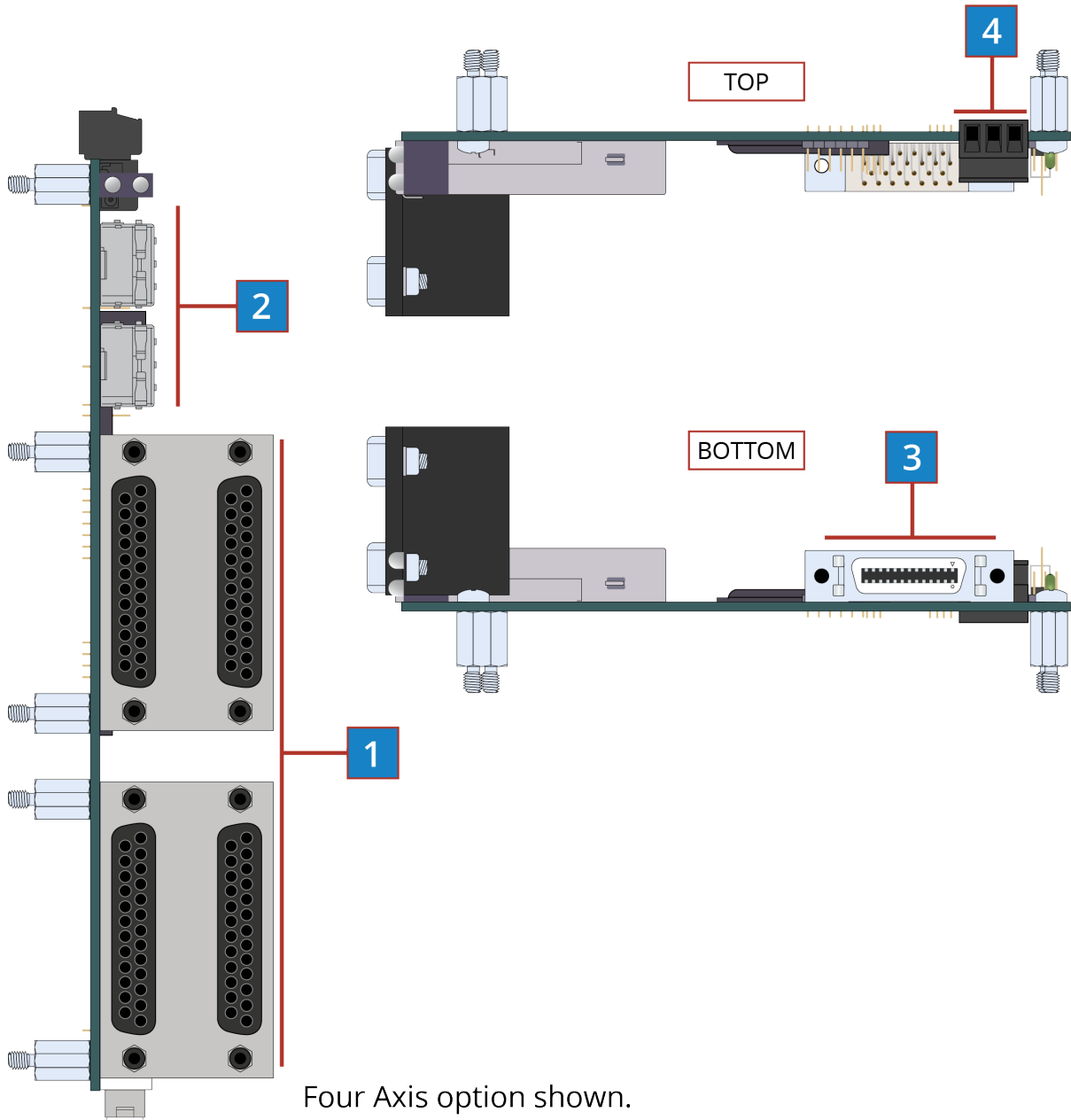
Figure 1: Installation Connection Overview (4 Axis Shown)



Four Axis option shown.

1	Connect the motor feedback and amplifier to the Axis Connectors.	Section 2.2.
2	Connect the PC HyperWire to the HyperWire In port.	Section 2.4.
3	Connect additional I/O as required by your application.	Section 2.3.
4	Connect the power supply to the Control Supply.	Section 2.1.1.

Figure 2: Installation Connection Overview (4 Axis OEM Shown)



1	Connect the motor feedback and amplifier to the Axis Connectors.	Section 2.2.
2	Connect the PC HyperWire to the HyperWire In port.	Section 2.4.
3	Connect additional I/O as required by your application.	Section 2.3.
4	Connect the power supply to the Control Supply.	Section 2.1.1.

This page intentionally left blank.

Chapter 1: SI4 Overview

The SI4 is a multi-axis digital drive based on the HyperWire communication protocol. The drive provides deterministic behavior, auto-identification, and is fully software configurable. The drive controls amplifiers which accept clock-and-direction commands.

Figure 1-1: SI4 Stepper Controller

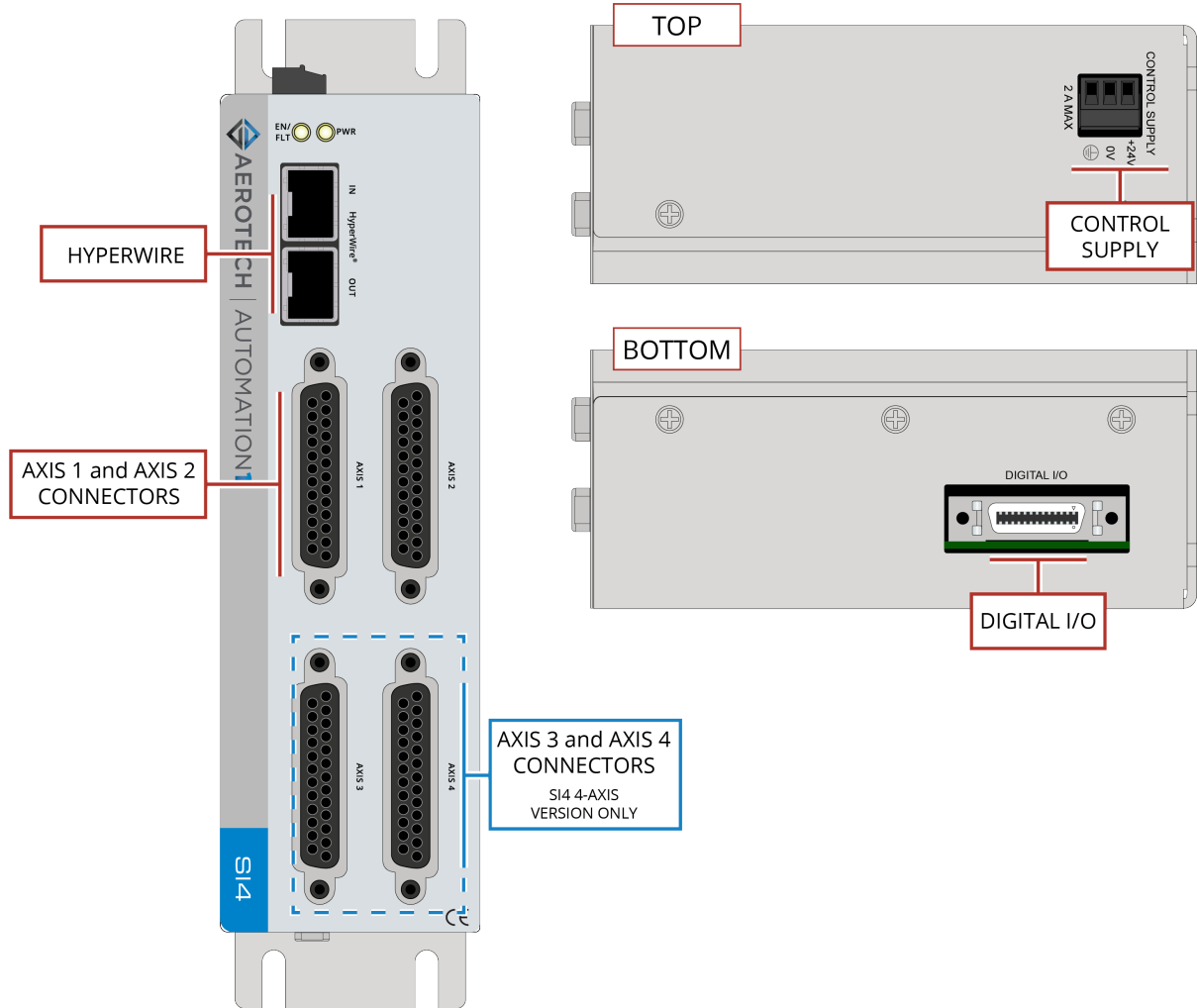
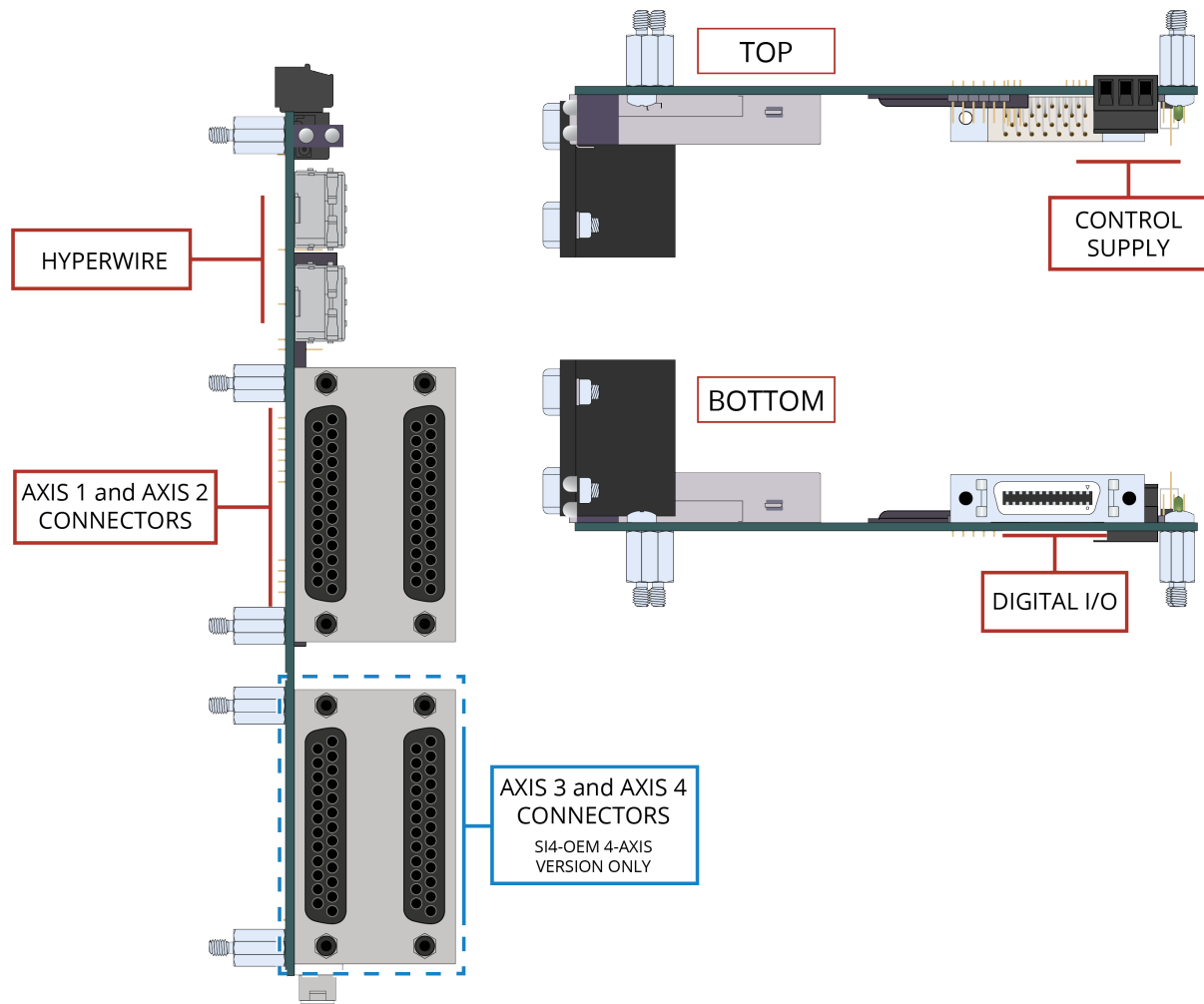


Figure 1-2: SI4-OEM Stepper Controller



1.1. Feature Summary

- 24 VDC control supply input ([Section 2.1.1.](#))
- 20 kHz Servo Loop Update Rate
- Stepper clock and direction outputs ([Section 2.2.1.](#))
- Single-ended and line driver square wave quadrature encoder input for position feedback ([Section 2.2.5.](#))
- Eight digital user outputs ([Section 2.3.1.](#))
- Nine digital user inputs
 - Eight digital inputs ([Section 2.3.2.](#))
 - One high-speed input ([Section 2.3.3.](#))
- Two or four HyperWire communication channels (one per axis) ([Section 2.4.](#))

1.2. Ordering Options

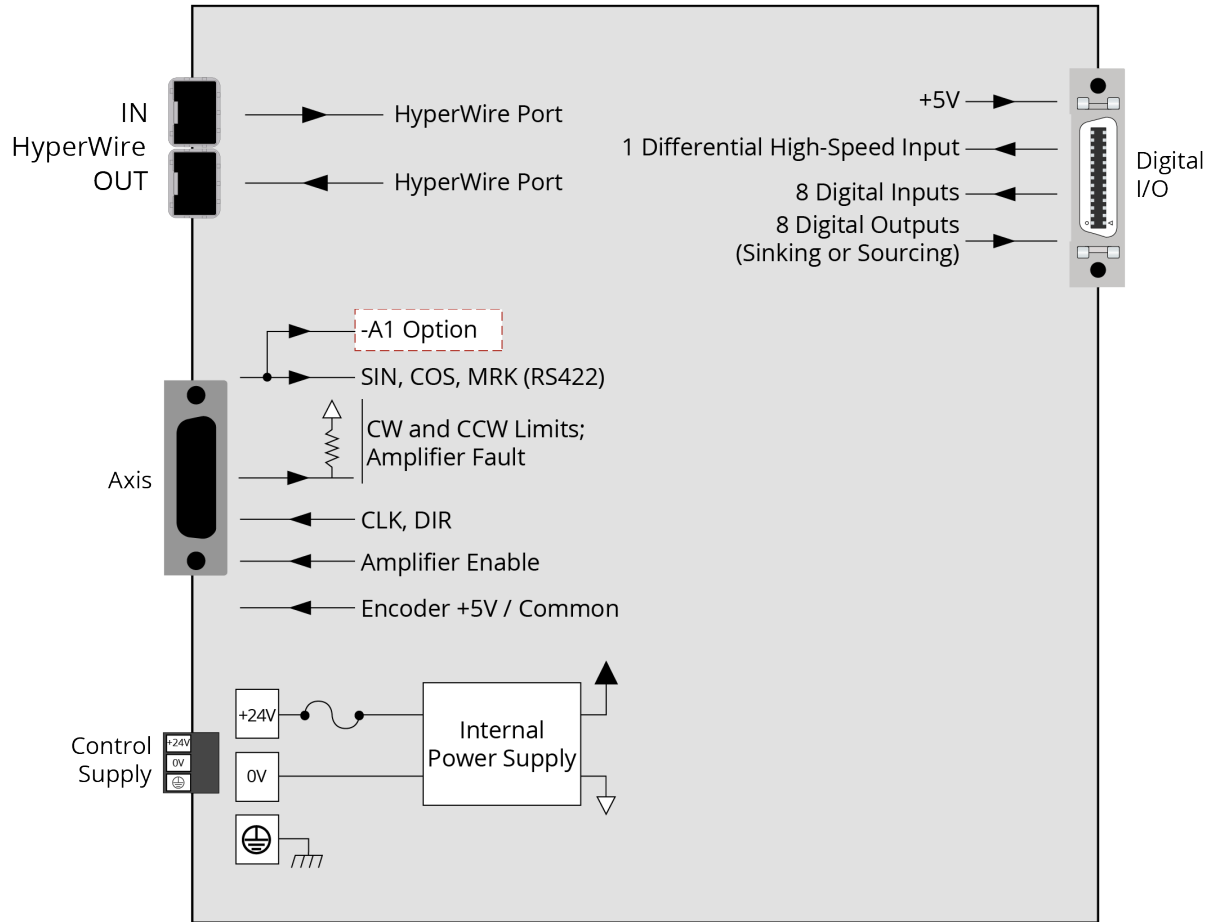
Table 1-1: Example Order and Ordering Options

Example	
Automation1-SI4-2P1-A1	
Options	
Automation1 Controller	
-SI4	Stepper Controller
Configuration	
-2P1	Two Axes of Control, Standard Packaging
-2P2	Two Axes of Control, OEM Packaging
-4P1	Four Axes of Control, Standard Packaging
-4P2	Four Axes of Control, OEM Packaging
Encoder (Section 2.2.5.2.)	
-A0	No Absolute Encoder support
-A1	Absolute Encoder support

1.3. Functional Block Diagram

The block diagram that follows shows a summary of the connector signals.

Figure 1-3: Functional Diagram



1.4. Electrical Specifications

Table 1-2: Electrical Specifications

Description		SI4
Control Supply	Input Voltage	24 VDC
	Input Current	2-Axis: 2 A max, 0.45 A typical 4-Axis: 2 A max, 0.6 A typical
User Power Supply Output		5 VDC (@ 500 mA)
Modes of Operation		Stepper
Protective Features		Control power supply under voltage

1.5. Mechanical Specifications

1.5.1. Mounting and Cooling

The controller must be installed in an enclosed control cabinet suitable for installation of power equipment. A minimum enclosure rating of IP54 is required to comply with safety standards. Make sure that there is sufficient clearance surrounding the controller for free airflow and for the routing of cables and connections. Consideration for items such as line reactors, line filters, and motor chokes or inductance should be made during the initial cabinet design phase.

Table 1-3: Mounting Specifications

		SI4
Customer-Supplied Enclosure		IP54 Compliant
		For DIN Rail Mounting, refer to Section 1.5.3. DIN Rail Mounting
Weight	Standard	0.60 kg
	OEM	0.25 kg
Mounting Hardware	Standard	M4 [#8] screws (four locations, not included)
	OEM	M3 screws and M3 standoffs (seven locations)
Mounting Orientation		Vertical (typical)
Dimensions		Refer to Section 1.5.2. Dimensions
Minimum Clearance	Airflow	~25 mm
	Connectors	~100 mm
Minimum Airflow (over the drive)	Standard	Provided by internal fan
	OEM	4.2 CMF (NOTE: Customer Supplied)
Operating Temperature		Refer to Section 1.6. Environmental Specifications
Drive IP Rating		IP20

1.5.2. Dimensions

Figure 1-4: Dimensions [-2P1 (Standard 2-Axis)]

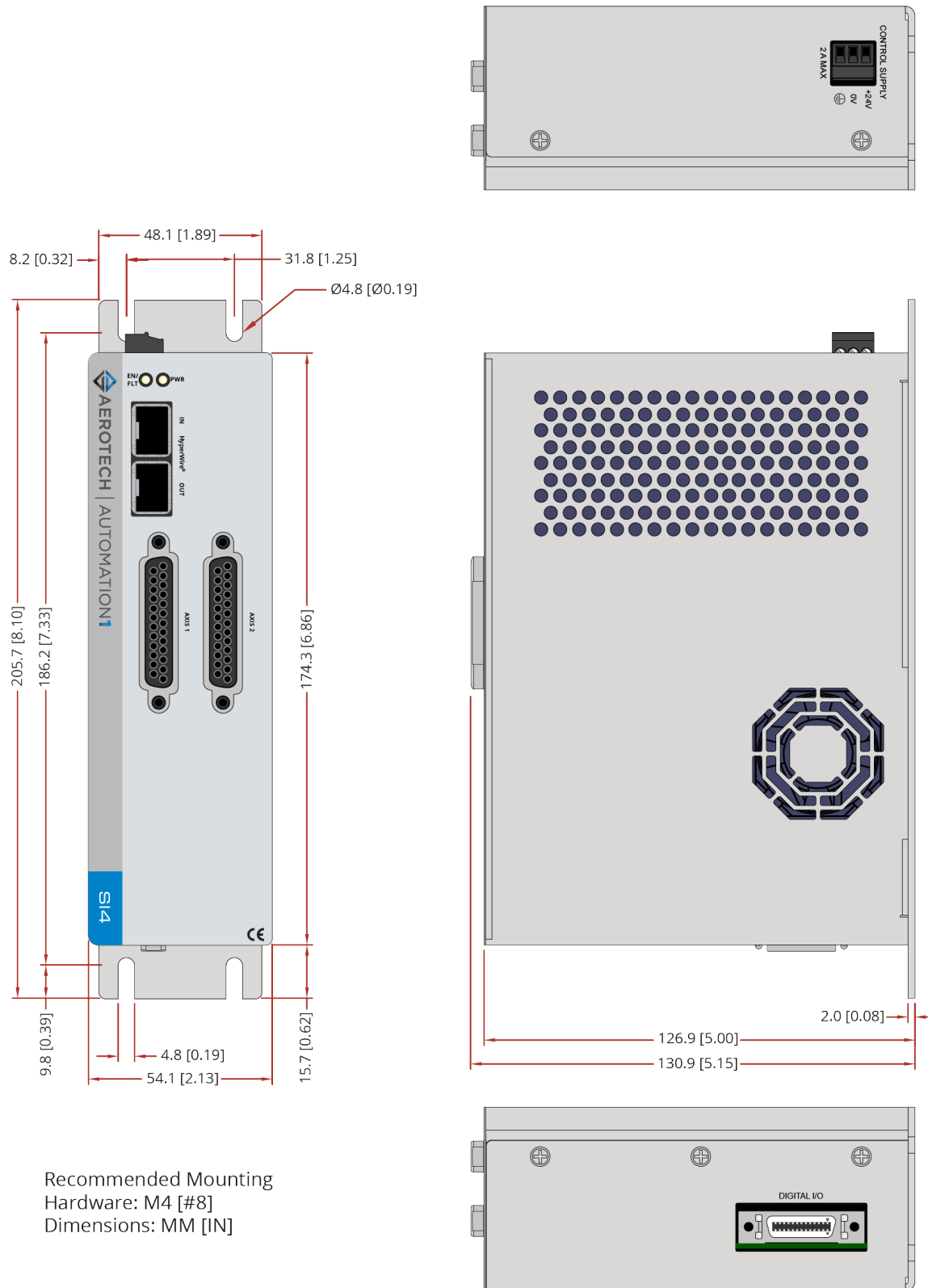


Figure 1-5: Dimensions [-4P1 (Standard 4-Axis)]

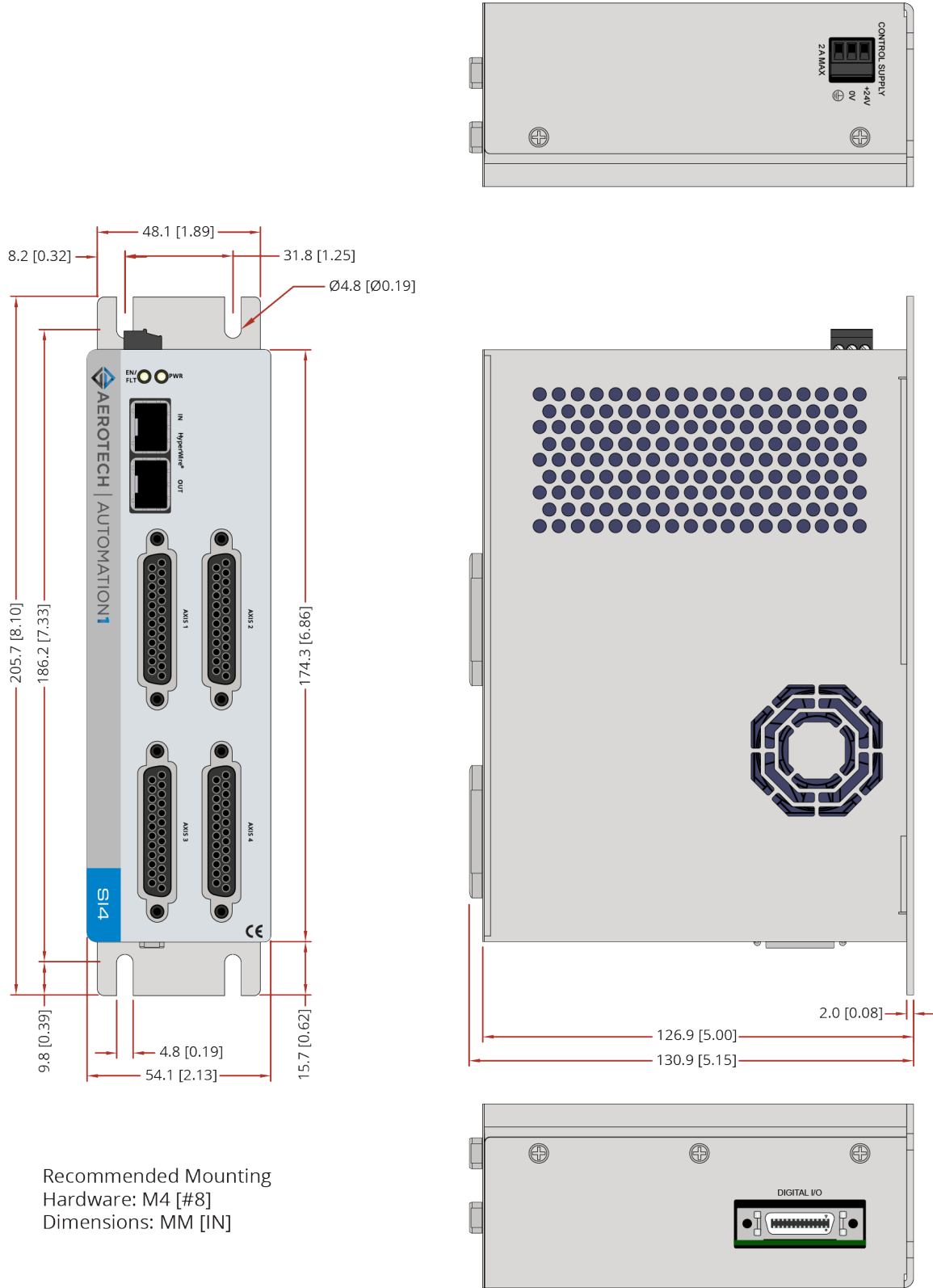


Figure 1-6: Dimensions [-2P2 (OEM 2-Axis)]

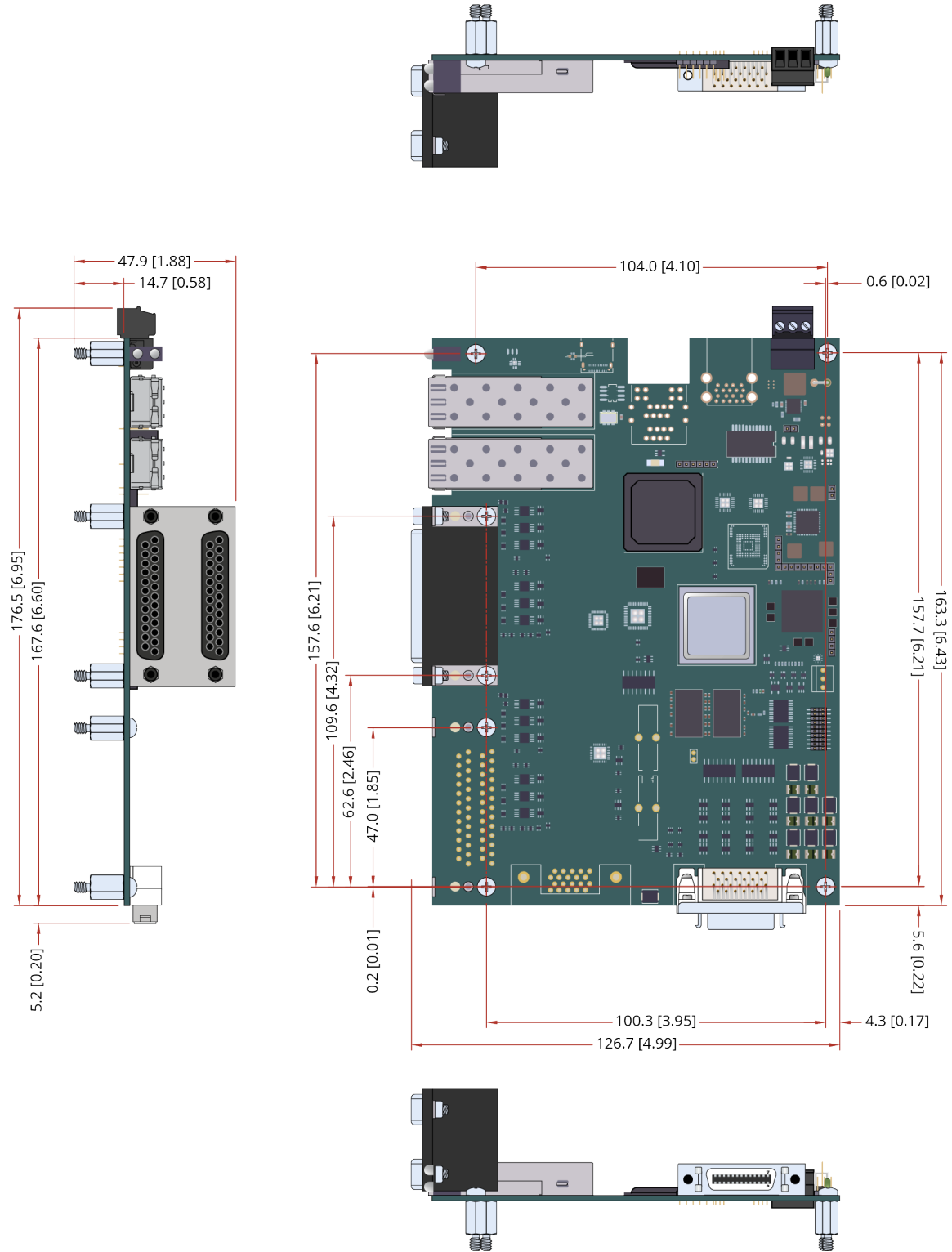
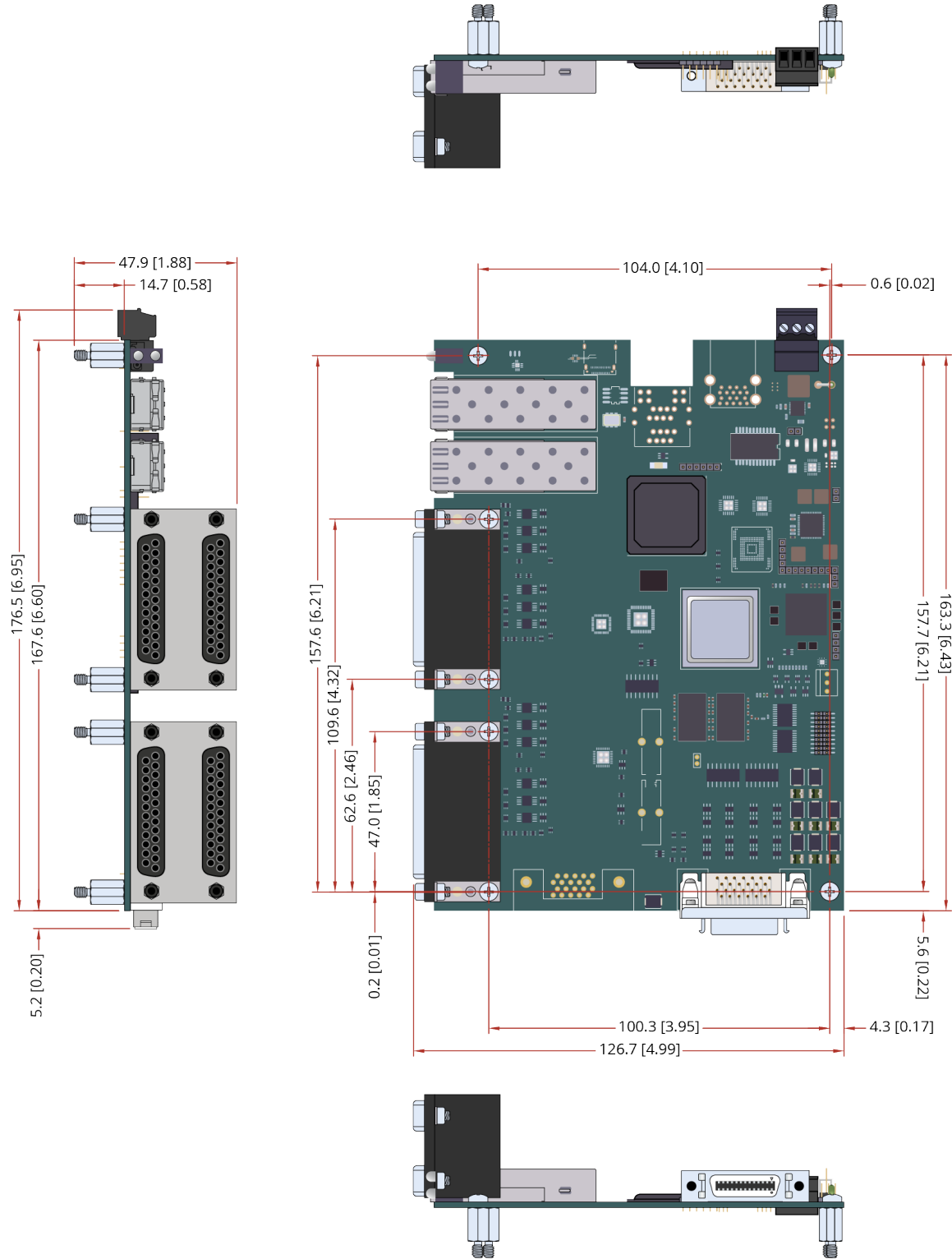


Figure 1-7: Dimensions [-4P2 (OEM 4-Axis)]



1.5.3. DIN Rail Mounting

A DIN rail can only be used with the -2P1 or -4P1 options.

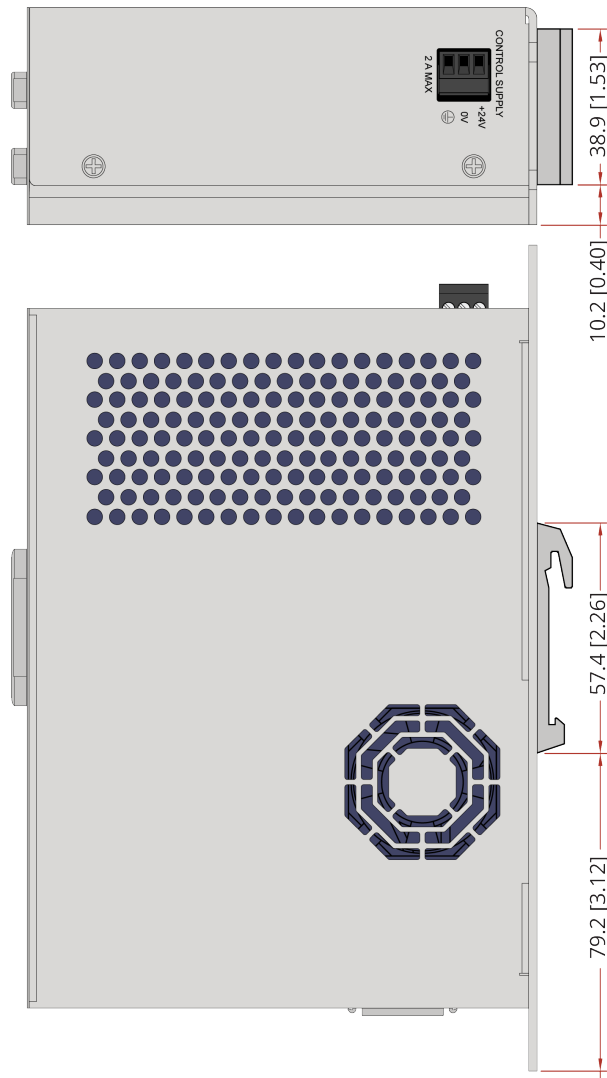
DIN Rail Mounting Procedure:

1. Mount the DIN rail clip to the SI4. The clip and #6-32 x 1/4 flat head screws are included in the DIN rail clip kit.
2. Cut the DIN rail so one complete mounting hole extends beyond the last component at each end.
3. Secure the DIN Rail to the mounting surface with #10-32 screws spaced every six inches.
NOTE: Do not install the DIN rail to the mounting surface with the components already attached.
4. Install all components on to the DIN rail.

Table 1-4: Mounting Parts

	Aerotech P/N
DIN Rail	EAM00914
DIN Rail Clip Kit	HyperWire-DIN

Figure 1-8: Din Rail Clip Dimensions



1.5.4. OEM Mounting

OEM Mounting Procedure:

1. Secure the seven M3 standoffs to the mounting surface with M3 hex nuts. These hex nuts are not included with the drive.

NOTE: Do not install the standoffs to the mounting surface with the drive already attached.

2. Attach the drive to the standoffs with the M3 screws. These screws are included with the drive.

Table 1-5: OEM Mounting Parts

	Aerotech P/N
M3 Threaded Hex Standoff, 10 mm length	EIH01181
M3 Philips Pan Head Screw, 8 mm length	HCY0003008

1.6. Environmental Specifications

The environmental specifications are listed below.

Table 1-6: Environmental Specifications

Temperature	Operating: 0 °C to 40 °C (32 °F to 104 °F)
	Maximum Surrounding Air: 40 °C (104 °F)
	Storage: -30 °C to 85 °C (-22 °C to 185 °F)
Humidity Non-condensing	The maximum relative humidity is 80% for temperatures that are less than 31 °C and decreases linearly to 50% relative humidity at 40 °C.
Operating Altitude	0 m to 2,000 m (0 ft to 6,562 ft) above sea level.
Pollution	Pollution Degree 2 Typically only nonconductive pollution occurs.
Operation	Use only indoors

1.7. Drive and Software Compatibility

This table shows the available drives and which version of the software first supported each drive. In the **Last Software Version** column, drives that show a specific version number are not supported after that version.

Table 1-7: Drive and Software Compatibility

Drive Type	First Software Version	Last Software Version
SI4	1.2.0	Current

Chapter 2: Installation and Configuration

The sections in this chapter include details on how to set up the electrical and safety components of your system. Obey all safety warnings, including those in [Safety Procedures and Warnings](#).

2.1. Input Power Connections

The controller has one DC input power connector for control power. For a full list of electrical specifications, refer to [Section 1.4](#). Refer to [Section 2.5](#) for a System Interconnection Drawing.

2.1.1. Control Supply Connector



DANGER: Shock and Fire Hazard



Electrical wiring must be designed and installed in accordance with local electrical safety regulations to prevent the risk of fire and electrical shock.

The Control Supply input supplies power to the communications and logic circuitry of the drive. The **+24V** input is connected to an internal fuse. For an isolated DC supply, connect **0V** to protective ground at the supply. Use twisted pair wiring to minimize radiated noise emissions (refer to [Figure 2-1](#)).

Figure 2-1: Control Supply Connections

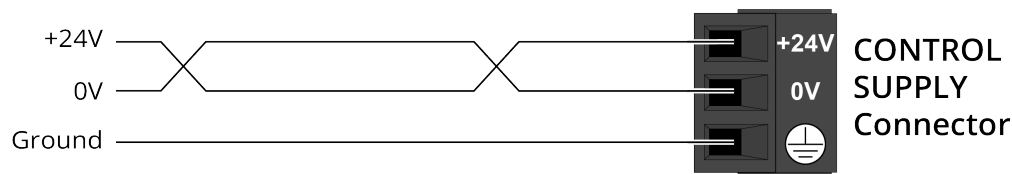


Table 2-1: Control Supply Connector Pinout

Pin	Description
+24 V	24 VDC ($\pm 10\%$) Control Power Input (2-Axis: 2 A max, 0.45 A typical; 4-Axis: 2 A max, 0.6 A typical)
0 V	Control Power Common Input
	Protective Ground

Table 2-2: Control Supply Mating Connector Ratings

Specification		Description
Type		3-Pin Terminal Block
Part Numbers		Aerotech: ECK02456 Phoenix: 1839610
Conductor Cross Section	One conductor, stranded with ferrule and plastic sleeve	18...22 AWG (0.25...0.75 mm ²)
	Two conductors (same cross-section), stranded, twin ferrule with plastic sleeve	20 AWG (0.5 mm ²)
Tightening Torque		0.22...0.25 N·m
Conductor Insulation Strip Length		7 mm (0.25 in)
(1) Refer to the manufacturer website for additional information.		

2.1.2. Minimizing Noise for EMC/CE Compliance



IMPORTANT: The SI4 is a component designed to be integrated with other electronics. EMC testing must be conducted on the final product configuration.

To reduce electrical noise, observe the following motor feedback and input power wiring techniques.

1. Use shielded cable for the feedback connector. Connect the shield to the backshell at each end of the cable.
2. Mount drives and power supplies on a conductive panel. Keep wire-run lengths to a minimum.
3. Use a separate wire for each ground connection to the drive. Use the shortest possible wire length.

For typical system interconnections, refer to [Section 2.5. System Interconnection](#).

2.2. Axis Connector

The connector pin assignment is shown in [Table 2-3](#) with detailed connection information in the following sections.

Table 2-3: Axis Connector Pinout

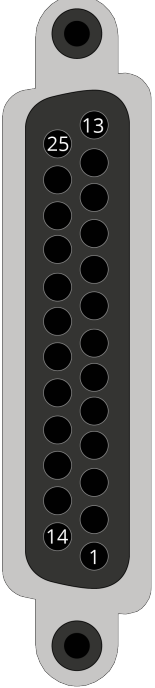
Pin #	Description	In/Out/Bi	Connector
1	Reserved	N/A	
2	Amplifier Enable	Output	
3	Signal Common	Output	
4	Reserved	N/A	
5	Reserved	N/A	
6	Reserved	N/A	
7	Clockwise End of Travel Limit	Input	
8	+5 V Supply (500 mA)	Output	
9	Primary Sine +	Input	
10	Primary Cosine +	Input	
11	Primary Marker +	Input	
	Absolute Data +	Bidirectional	
12	Absolute Clock +	Output	
13	Reserved	N/A	
14	Reserved	N/A	
15	Amplifier Fault	Input	
16	Stepper Clock	Output	
17	Stepper Direction	Output	
18	Reserved	N/A	
19	Reserved	N/A	
20	Counterclockwise End of Travel Limit	Input	
21	Signal Common	Output	
22	Primary Sine -	Input	
23	Primary Cosine -	Input	
24	Primary Marker -	Input	
	Absolute Data -	Bidirectional	
25	Absolute Clock -	Output	

Table 2-4: Axis Mating Connector Ratings

Specification	25-Pin Solder Cup	Backshell
Aerotech Part Number	ECK00101	ECK00656
Amphenol Part Number ⁽¹⁾	DB25P064TXLF	17E-1726-2
Maximum Wire Size	20 AWG (0.5 mm ²)	N/A

(1) Refer to the manufacturer website for additional information.

2.2.1. Stepper Clock and Stepper Direction Signals

The SI4 uses the Stepper Clock and Stepper Direction outputs to interface to stepper motor drivers.

Table 2-5: Clock and Direction Pins on the Axis Connector

Pin #	Description	In/Out/Bi
16	Stepper Clock	Output
17	Stepper Direction	Output

Table 2-6: Stepper Clock and Stepper Direction Signal Output Specifications

Specification	Value
Output Voltage	5V TTL
Maximum Output Frequency	25 MHz
Maximum Source / Sink Current	±20 mA
Clock Default State	Logic Low (0 V)
Direction Default State	Logic Low (0 V)
Maximum Clock Pulse Width	25 μs
Minimum Clock Pulse Width	20 ns

To change the direction of the rotation of the motor, reverse the polarity of one of the phases. Reverse the A and A-N or B and B-N wires at the stepper motor driver.

Table 2-7: Stepper Direction Signal Output Polarity

Specification	Value
Negative / CCW Direction	Logic Low (0 V)
Positive / CW Direction	Logic High (+5 V)

Figure 2-2: Stepper Clock and Stepper Direction Timing

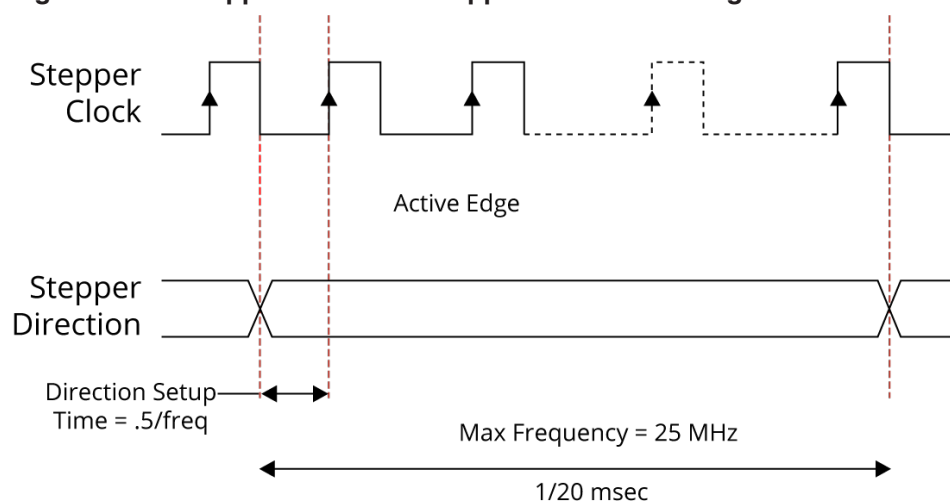
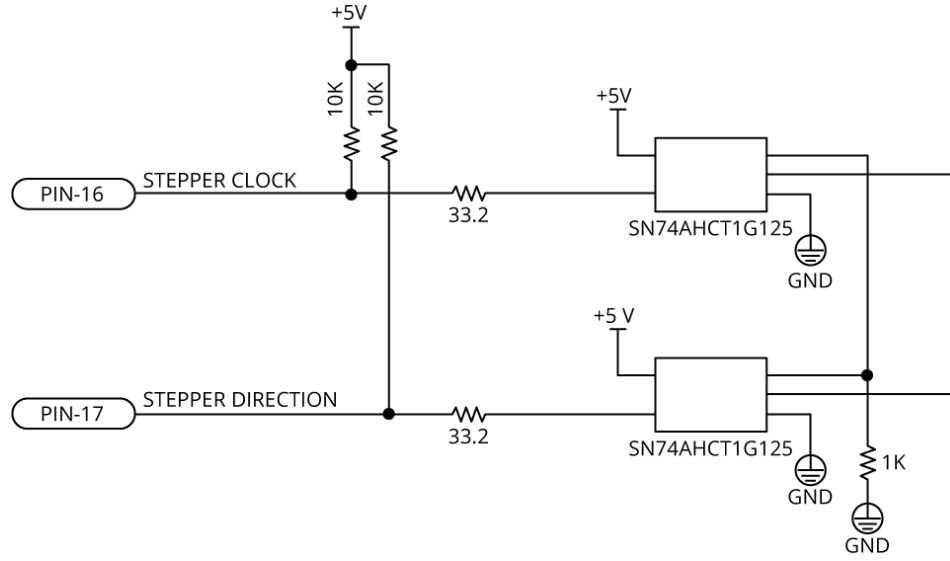


Figure 2-3: Stepper Clock and Stepper Direction Output Schematic



2.2.2. End of Travel Limits

End of Travel (EOT) limits are required to define the end of the physical travel on linear axes. Positive or clockwise motion is stopped by the clockwise (CW) end of travel limit input. Negative or counterclockwise motion is stopped by the counterclockwise (CCW) end of travel limit input. All of the end-of-travel limit inputs accept 0-24 VDC level signals. Limit directions are relative to the encoder polarity in the diagnostics display (refer to Figure 1-1).

Table 2-8: End of Travel Limit Pins on the Axis Connector

Pin #	Description	In/Out/Bi
3	Signal Common	Output
7	Clockwise End of Travel Limit	Input
8	+5 V Supply (500 mA)	Output
20	Counterclockwise End of Travel Limit	Input

The active state (High/Low) of the EOT limits is software selectable (by the EndOfTravelLimitSetup axis parameter). Figure 2-4 shows the possible wiring configurations for normally-open and normally-closed switches and the parameter setting to use for each configuration. Use NPN-type normally-closed limit switches (Active High) to provide fail-safe behavior in the event of an open circuit.

Figure 2-4: End of Travel Limit Input Connections

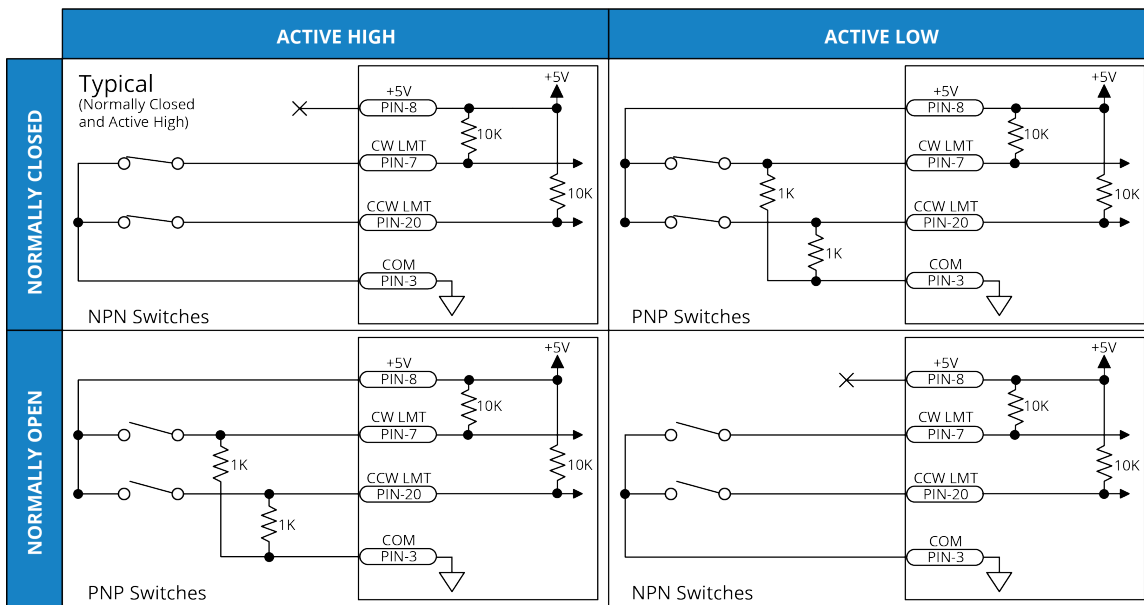
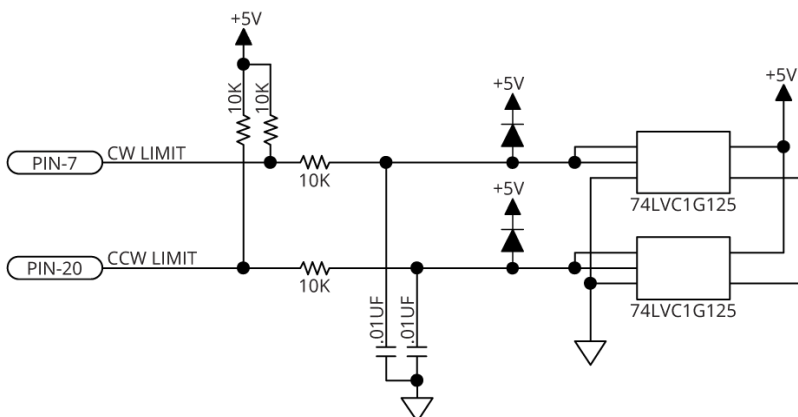


Figure 2-5: End of Travel Limit Input Schematic



2.2.2.1. End of Travel Limit Phasing

If the EOT limits are reversed, you will be able to move further into a limit but be unable to move out. To correct this, swap the connections to the CW and CCW inputs at the Feedback connector or swap the CW and CCW limit functionality in the software using the EndOfTravelLimitSetup parameter. View the logic level of the EOT limit inputs in the Diagnostics display (shown in [Figure 2-6](#)).

Figure 2-6: End of Travel Limit Input Diagnostic Display

Polling rate: Medium
 Diagnostics
 Data highlighted in blue has not been updated.

Item	X	Y	Z	U
Status				
Position Feedback	000000000000	000000000000	000000000000	000000000000
Position Calibration All	000000000000	000000000000	000000000000	000000000000
Position Camming/Gearing	000000000000	000000000000	000000000000	000000000000
Primary Feedback	000000000000	000000000000	000000000000	000000000000
Auxiliary Feedback	000000000000	000000000000	000000000000	000000000000
Gantry Marker Difference	0.0000	0.0000	0.0000	0.00
Analog Input 0	0.0000	0.0000	0.0000	0.00
Analog Input 1	0.0000	0.0000	0.0000	0.00
Analog Input 2	0.0000	0.0000	0.0000	0.00
Analog Input 3	0.0000	0.0000	0.0000	0.00
Digital Input 15:0	0000 0000 0000 0000	0000 0000 0000 0000	0000 0000 0000 0000	0000 0000 0000 00
Digital Input 31:16	0000 0000 0000 0000	0000 0000 0000 0000	0000 0000 0000 0000	0000 0000 0000 00
Digital Output 15:0	0000 0000 0000 0000	0000 0000 0000 0000	0000 0000 0000 0000	0000 0000 0000 00
Digital Output 31:16	0000 0000 0000 0000	0000 0000 0000 0000	0000 0000 0000 0000	0000 0000 0000 00
Average Velocity Feedback	000000000000	000000000000	000000000000	000000000000
Current Feedback	0.0000	0.0000	0.0000	0.00
Transition Offset Errors	0	0	0	
Hardware				
Enable	--	--	--	--
CW	--	--	--	--
CCW	--	--	--	--
Home	--	--	--	--
Marker	--	--	--	--
Hall A	--	--	--	--
Hall B	--	--	--	--
Hall C	--	--	--	--
ESTOP	--	--	--	--
Brake	--	--	--	--

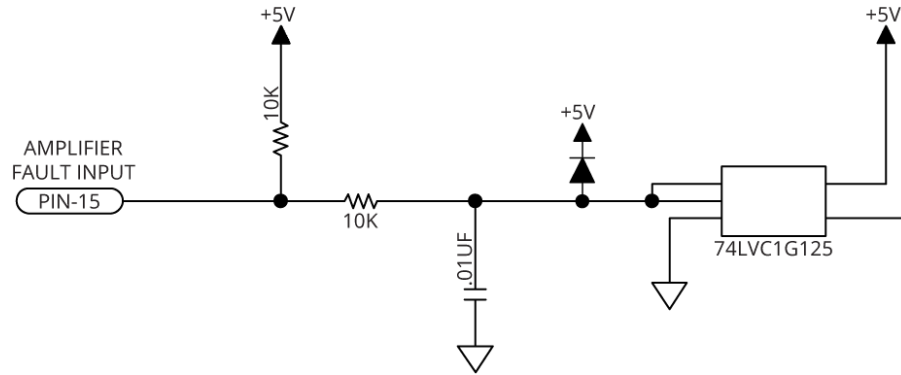
2.2.3. Amplifier Fault Inputs

Use the amplifier fault input to monitor the stepper driver status. Use the FaultSetup parameter to configure the active polarity. The use of this input is optional.

Table 2-9: Amplifier Fault Input Specifications

Specification	Value
Maximum Input Voltage	5V

Figure 2-7: Fault Input Schematic



2.2.4. Amplifier Enable Output

Use the AmplifierEnableOutputMode parameter to set the enabled state of the amplifier enable output to sinking or sourcing. The default state is sourcing. However, during a drive reset and when the amplifier is disabled, the amplifier enable output is high-impedance. To ensure a fail-safe state, you must install external pull resistors on the output to pull it to a safe state when the amplifier is disabled.

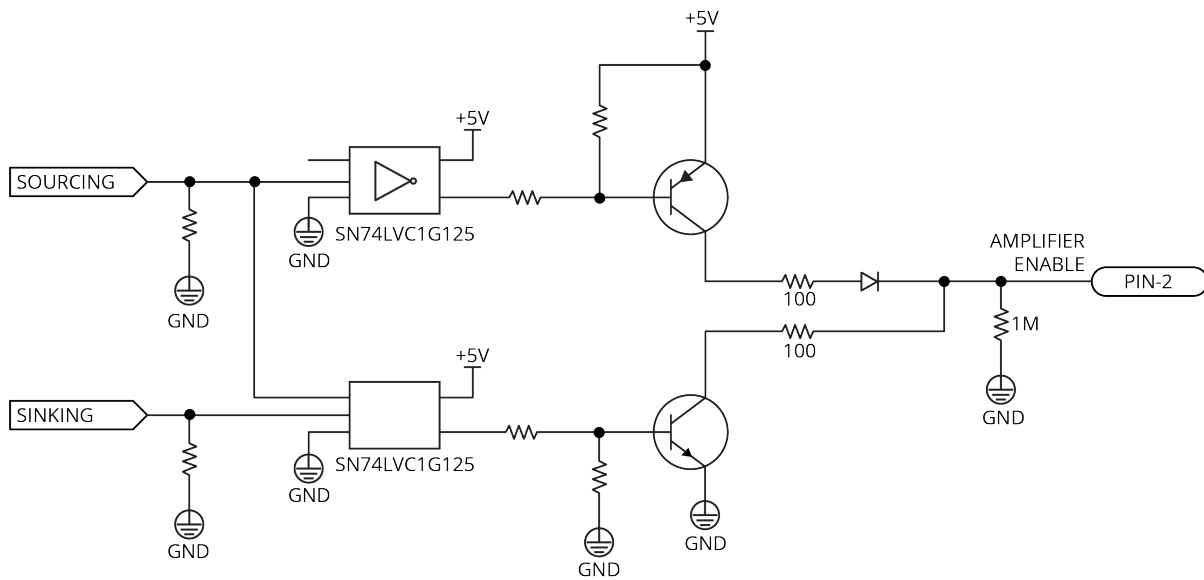
Table 2-10: Amplifier Enable Connector Pin on the Axis Connector

Pin #	Description	In/Out/Bi
2	Amplifier Enable	Output

Table 2-11: Amplifier Enable Output Specifications

Specification	Value
High-Level Output Voltage	4.4 V
Output Current Source / Sink	10 mA

Figure 2-8: Amplifier Enable Output Schematic



2.2.5. Primary Encoder Inputs

The primary encoder inputs are accessible through the Axis connector. Use the PrimaryFeedbackType parameter to configure the controller to accept an encoder signal type.

Square Wave encoder signals: [Section 2.2.5.1.](#)

Absolute encoder signals: [Section 2.2.5.2.](#)

Refer to [Section 2.2.5.3.](#) for encoder feedback phasing.



IMPORTANT: Physically isolate the encoder wiring from motor, AC power, and all other power wiring

Table 2-12: Primary Encoder Pins on the Axis Connector

Pin #	Description	In/Out/Bi
8	+5 V Supply (500 mA)	Output
9	Primary Sine +	Input
10	Primary Cosine +	Input
11	Primary Marker +	Input
	Absolute Data +	Bidirectional
12	Absolute Clock +	Output
21	Signal Common	Output
22	Primary Sine -	Input
23	Primary Cosine -	Input
24	Primary Marker -	Input
	Absolute Data -	Bidirectional
25	Absolute Clock -	Output

2.2.5.1. Square Wave Encoder

The SI4 supports both single-ended and differential encoder feedback signals.

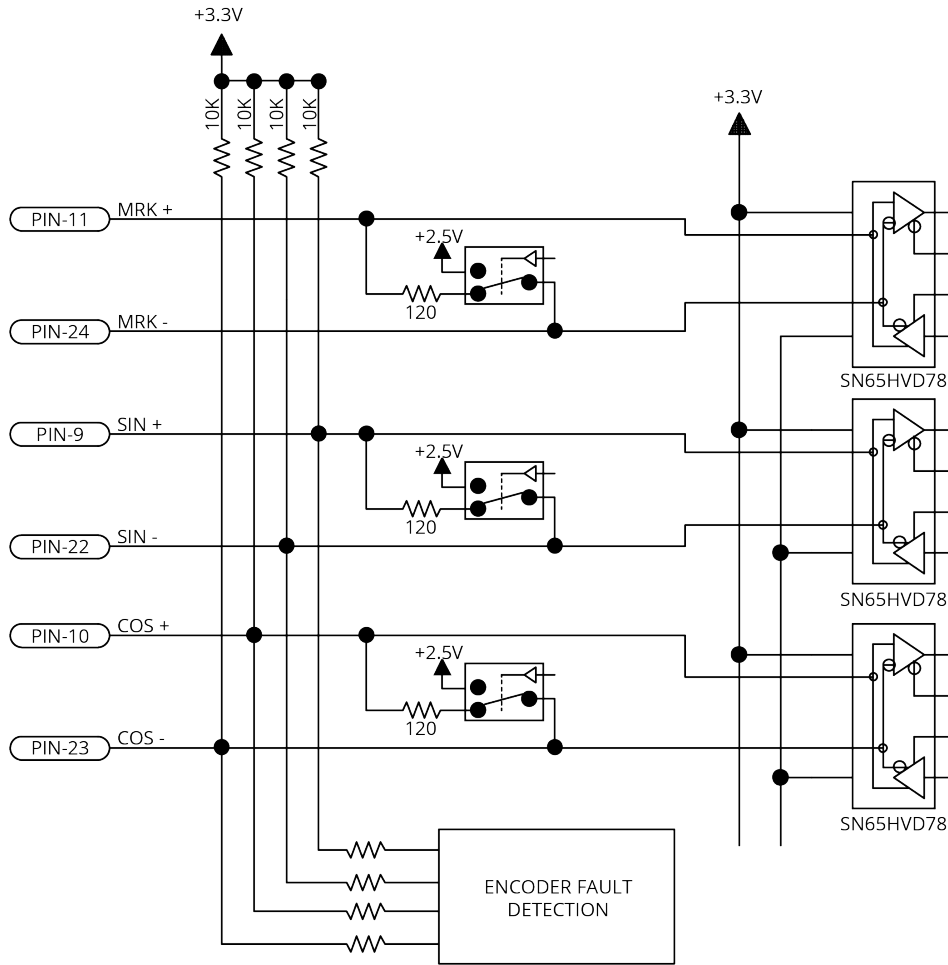
For single-ended feedback configuration, use the Sine +, Cosine +, and Marker + inputs. Do not connect the Sine -, Cosine - and Marker - inputs. Set the FeedbackSetup parameter to configure the hardware for single-ended encoder feedback devices.

For differential feedback configuration, the SI4 accepts RS-422 square wave encoder signals. The controller will generate a feedback fault if it detects an invalid signal state caused by an open or shorted signal connection. Use twisted-pair wiring for the highest performance and noise immunity.

Table 2-13: Square Wave Encoder Specifications

Specification	Value
Encoder Frequency	10 MHz maximum (25 ns minimum edge separation)
x4 Quadrature Decoding	40 million counts/sec

Figure 2-9: Square Wave Encoder Schematic (Axis Connector)



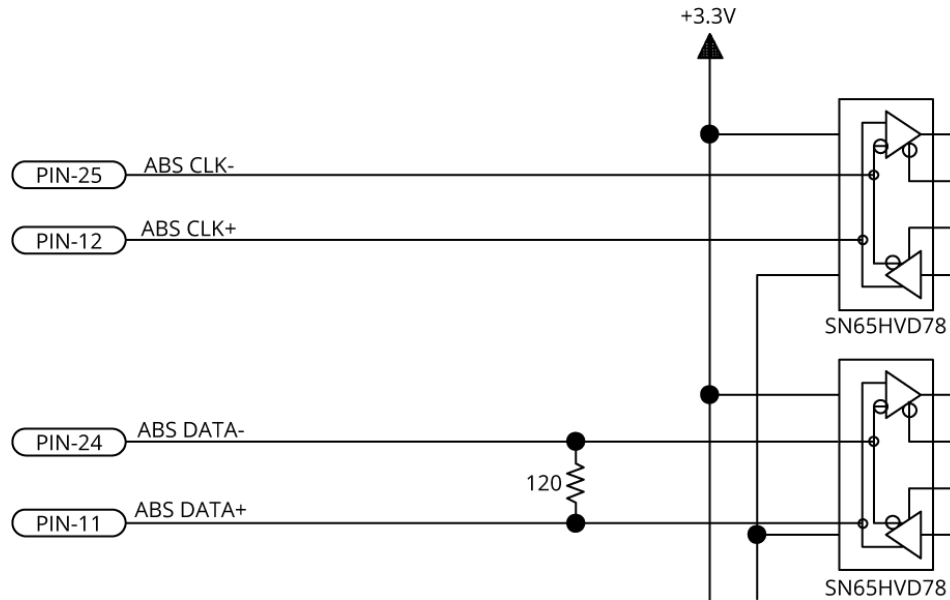
2.2.5.2. Absolute Encoder

The SI4 retrieves absolute position data along with encoder fault information through a serial data stream from the absolute encoder. Use twisted-pair wiring for the highest performance and noise immunity. Refer to [Figure 2-10](#) for the serial data stream interface. Refer to the Help file for information on how to set up your EnDat, BiSS, or SSI absolute encoder parameters.

Table 2-14: Absolute Encoder Specifications

Specification	Value
Sampling Frequency	20 kHz
Maximum Reading Speed	Refer to your encoder data sheet.

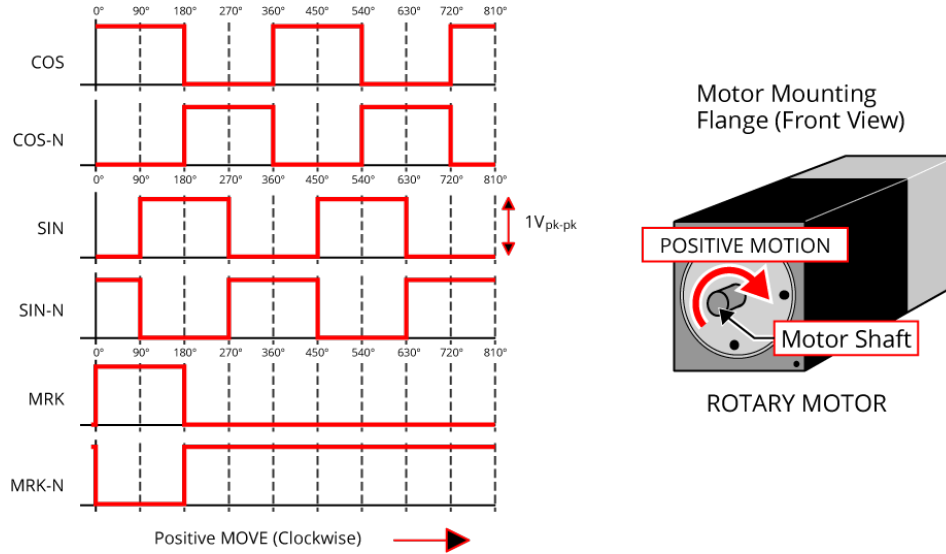
Figure 2-10: Absolute Encoder Schematic (Axis Connector)



2.2.5.3. Encoder Phasing

Incorrect encoder polarity will cause the system to fault when enabled or when a move command is issued. [Figure 2-11](#) illustrates the proper encoder phasing for clockwise motor rotation (or positive forcer movement for linear motors). To verify, move the motor by hand in the CW (positive) direction while observing the position of the encoder in the diagnostics display (see [Figure 2-12](#)).

Figure 2-11: Encoder Phasing Reference Diagram (Standard)



IMPORTANT: Encoder manufacturers may refer to the encoder signals as A, B, and Z. The proper phase relationship between signals is shown in [Figure 2-11](#).

Figure 2-12: Position Feedback in the Diagnostic Display

Polling rate: Medium

Diagnostics					
Data highlighted in blue has not been updated.					
Item	X	Y	Z	U	
Status					
Position Feedback	000000000000	000000000000	000000000000	000000000000	
Position Calibration All	000000000000	000000000000	000000000000	000000000000	
Position Camming/Gearing	000000000000	000000000000	000000000000	000000000000	
Primary Feedback Status					
Primary Feedback	000000000000	000000000000	000000000000	000000000000	
Auxiliary Feedback	000000000000	000000000000	000000000000	000000000000	
Tasks					
Gantry Marker Difference	0.0000	0.0000	0.0000	0.00	
Analog Input 0	0.0000	0.0000	0.0000	0.00	
Analog Input 1	0.0000	0.0000	0.0000	0.00	
Analog Input 2	0.0000	0.0000	0.0000	0.00	
Analog Input 3	0.0000	0.0000	0.0000	0.00	
Controller					
Digital Input 15:0	0000 0000 0000 0000	0000 0000 0000 0000	0000 0000 0000 0000	0000 0000 0000 00	
Digital Input 31:16	0000 0000 0000 0000	0000 0000 0000 0000	0000 0000 0000 0000	0000 0000 0000 00	
Digital Output 15:0	0000 0000 0000 0000	0000 0000 0000 0000	0000 0000 0000 0000	0000 0000 0000 00	
Digital Output 31:16	0000 0000 0000 0000	0000 0000 0000 0000	0000 0000 0000 0000	0000 0000 0000 00	
Average Velocity Feedback	000000000000	000000000000	000000000000	000000000000	
Current Feedback	0.0000	0.0000	0.0000	0.00	
Transition Offset Errors	0	0	0	0	
Hardware					
Enable	--	--	--	--	
CW	--	--	--	--	
CCW	--	--	--	--	
Home	--	--	--	--	
Marker	--	--	--	--	
Hall A	--	--	--	--	
Hall B	--	--	--	--	
Hall C	--	--	--	--	
ESTOP	--	--	--	--	
Brake	--	--	--	--	

2.2.5.4. Stepper Motor Phasing

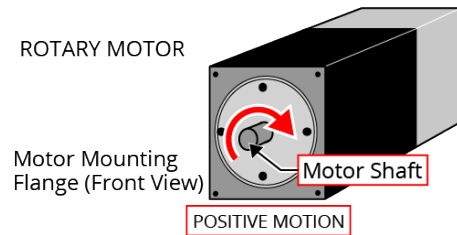
A stepper motor can be run with or without an encoder.

Without an Encoder: You do not need to phase the motor.

With an Encoder: Because the end of travel (EOT) limit inputs are relative to motor rotation, it is important to phase the motor.

Run a positive motion command. The motor is phased correctly if there is a positive scaling factor (determined by the ServoLoopSetup parameter) and the motor moves in a clockwise direction when you view the motor from the front mounting flange (Figure 2-13). If the motor moves in a counterclockwise direction, reverse the motor leads and re-run the command. After the motor has been phased, if you want to change the direction of positive motion, use the ReverseMotionDirection parameter.

Figure 2-13: Positive Motor Direction



For Aerotech-supplied systems, the motor and encoder are correctly configured and connection adjustments are not necessary.

2.3. Digital I/O Connector

This connector has two groups of four digital, optically-isolated outputs, two groups of four digital, optically-isolated inputs, and one differential high-speed user input.

Table 2-15: Digital I/O Connector Pinout

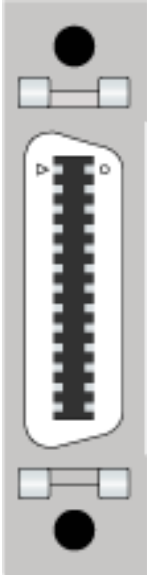
Pin #	Description	In/Out/Bi	Connector
14	Output Common for Digital Outputs 0-3	Output	
1	Opto-Isolated Digital Output 0	Output	
15	Opto-Isolated Digital Output 1	Output	
2	Opto-Isolated Digital Output 2	Output	
16	Opto-Isolated Digital Output 3	Output	
3	Output Common for Digital Outputs 4-7	Output	
17	Opto-Isolated Digital Output 4	Output	
4	Opto-Isolated Digital Output 5	Output	
18	Opto-Isolated Digital Output 6	Output	
5	Opto-Isolated Digital Output 7	Output	
19	Input Common for Digital Inputs 0-3	Output	
6	Opto-Isolated Digital Input 0 / Home Limit Axis 1	Input	
20	Opto-Isolated Digital Input 1 / Home Limit Axis 2	Input	
7	Opto-Isolated Digital Input 2 / Home Limit Axis 3	Input	
21	Opto-Isolated Digital Input 3 / Home Limit Axis 4	Input	
8	Input Common for Digital Inputs 4-7	Output	
22	Opto-Isolated Digital Input 4	Input	
9	Opto-Isolated Digital Input 5	Input	
23	Opto-Isolated Digital Input 6	Input	
10	Opto-Isolated Digital Input 7	Input	
11	High-Speed Differential Input 8-	Input	
24	High-Speed Differential Input 8+	Input	
26	Reserved	N/A	
12	Common	Output	
13	Common	Output	
25	+5 V (500 mA max)	Output	

Table 2-16: Digital I/O Mating Connector Ratings [-EB1]

Specification	26-Pin Solder Cup	Backshell
Aerotech Part Number	ECK02514	ECK02517
3M Part Number ⁽¹⁾	10126-3000PE	10326-52F0-008
Maximum Wire Size	24 AWG (0.2 mm ²)	N/A
⁽¹⁾ Refer to the manufacturer website for additional information.		

2.3.1. Digital Outputs

Optically-isolated solid-state relays drive the digital outputs. You can connect the digital outputs in current sourcing or current sinking mode but you must connect all four outputs in a group in the same configuration. Refer to [Figure 2-15](#) and [Figure 2-16](#).

The digital outputs are not designed for high-voltage isolation applications and they should only be used with ground-referenced circuits.

You must install suppression diodes on digital outputs that drive relays or other inductive devices. To see an example of a current sourcing output that has diode suppression, refer to [Figure 2-15](#). To see an example of a current sinking output that has diode suppression, refer to [Figure 2-16](#).

The digital outputs have overload protection. They will resume normal operation when the overload is removed.

Table 2-17: Digital Output Specifications

Digital Output Specifications	Value
Maximum Voltage	24 V (26 V Maximum)
Maximum Sink/Source Current	250 mA/output
Output Saturation Voltage	0.9 V at maximum current
Output Resistance	3.7 Ω
Rise / Fall Time	250 μ s (2K pull up to 24V)
Reset State	Output Off (High Impedance State)

Table 2-18: Digital Output Pins on Digital I/O Connector

Pin #	Description	In/Out/BI
14	Output Common for Digital Outputs 0-3	Output
1	Opto-Isolated Digital Output 0	Output
15	Opto-Isolated Digital Output 1	Output
2	Opto-Isolated Digital Output 2	Output
16	Opto-Isolated Digital Output 3	Output
3	Output Common for Digital Outputs 4-7	Output
17	Opto-Isolated Digital Output 4	Output
4	Opto-Isolated Digital Output 5	Output
18	Opto-Isolated Digital Output 6	Output
5	Opto-Isolated Digital Output 7	Output

Figure 2-14: Digital Outputs Schematic

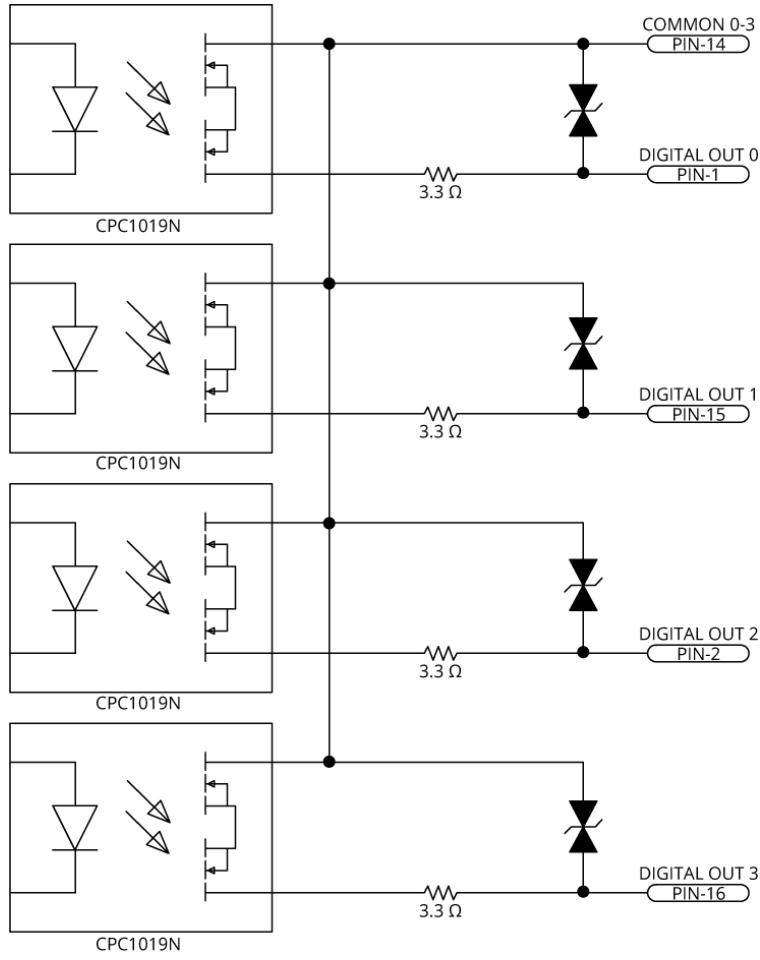
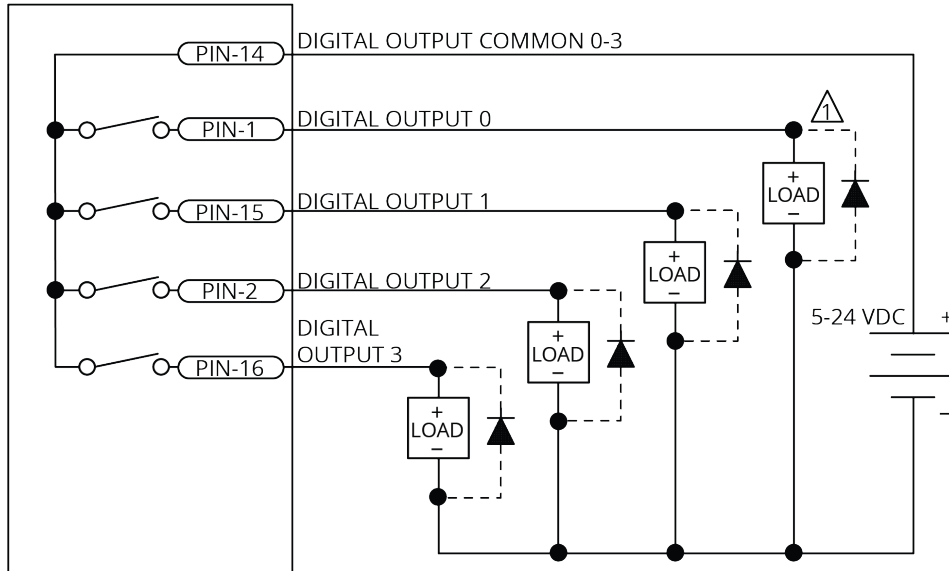
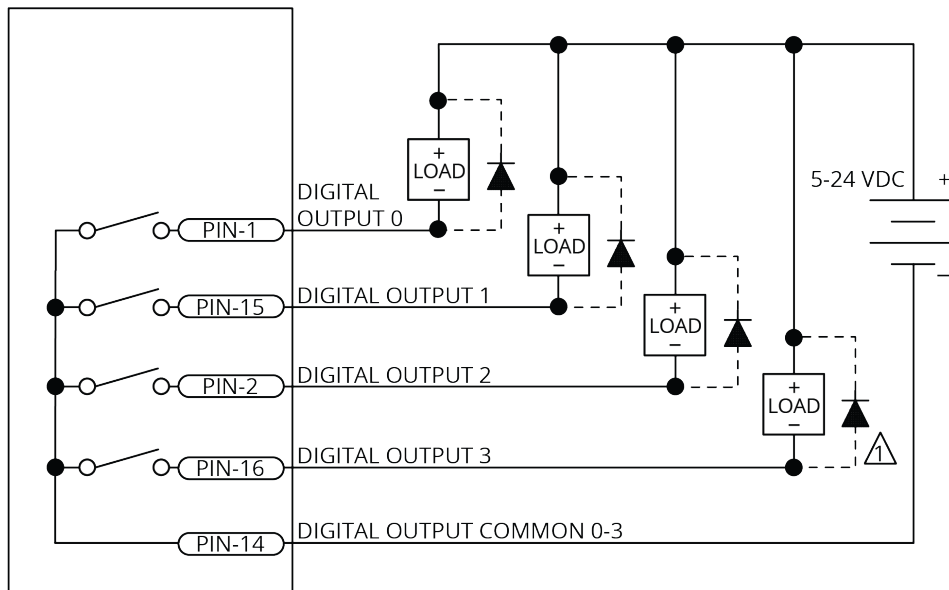


Figure 2-15: Digital Outputs Connected in Current Sourcing Mode



 DIODE REQUIRED ON EACH OUTPUT THAT DRIVES AN INDUCTIVE DEVICE (COIL), SUCH AS A RELAY.

Figure 2-16: Digital Outputs Connected in Current Sinking Mode



 DIODE REQUIRED ON EACH OUTPUT THAT DRIVES AN INDUCTIVE DEVICE (COIL), SUCH AS A RELAY.

2.3.2. Digital Inputs

Input bits are arranged in groups of 4 and each group shares a common pin. This lets a group be connected to current sourcing or current sinking devices, based on the connection of the common pin in that group.

To be able to connect an input group to current sourcing devices, connect the input group's common pin to the power supply return (-). Refer to [Figure 2-18](#).

To be able to connect an input group to current sinking devices, connect the input group's common pin to the power supply source (+). Refer to [Figure 2-19](#).

The digital inputs are not designed for high-voltage isolation applications. They should only be used with ground-referenced circuits.

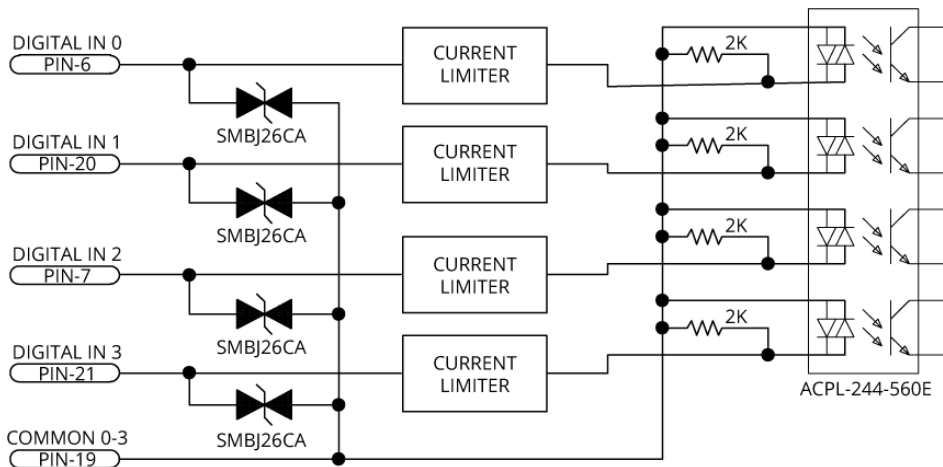
Table 2-19: Digital Input Specifications

Input Voltage	Approximate Input Current	Turn On Time	Turn Off Time
+5 V to +24 V	6 mA	10 μ s	43 μ s

Table 2-20: Digital Input Pins on the Digital I/O Connector

Pin #	Description	In/Out/Bi
19	Input Common for Digital Inputs 0-3	Output
6	Opto-Isolated Digital Input 0 / Home Limit Axis 1	Input
20	Opto-Isolated Digital Input 1 / Home Limit Axis 2	Input
7	Opto-Isolated Digital Input 2 / Home Limit Axis 3	Input
21	Opto-Isolated Digital Input 3 / Home Limit Axis 4	Input
8	Input Common for Digital Inputs 4-7	Output
22	Opto-Isolated Digital Input 4	Input
9	Opto-Isolated Digital Input 5	Input
23	Opto-Isolated Digital Input 6	Input
10	Opto-Isolated Digital Input 7	Input

Figure 2-17: Digital Inputs Schematic



Each group of four inputs must be connected in an all sourcing or all sinking configuration.

Figure 2-18: Digital Inputs Connected to Current Sourcing (PNP) Devices

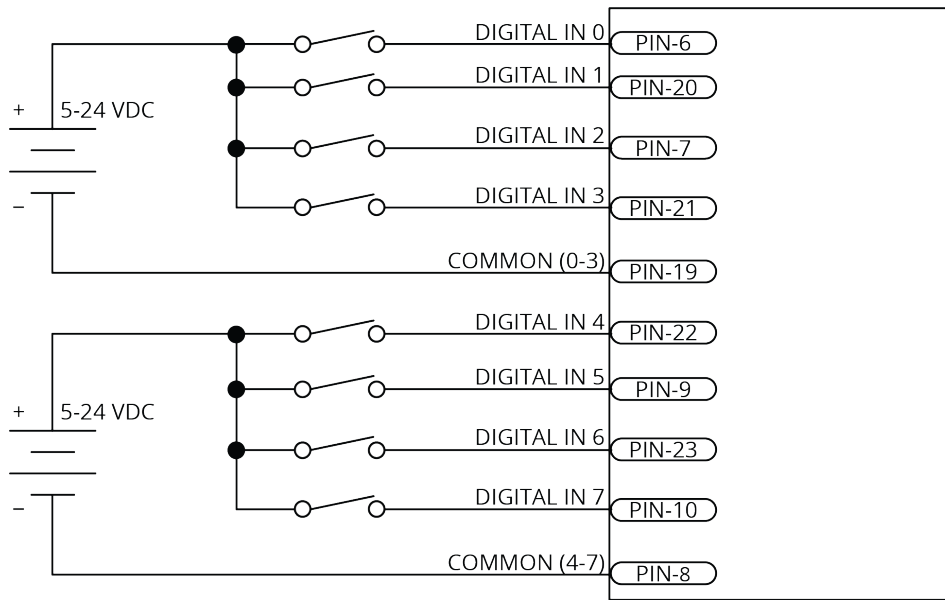
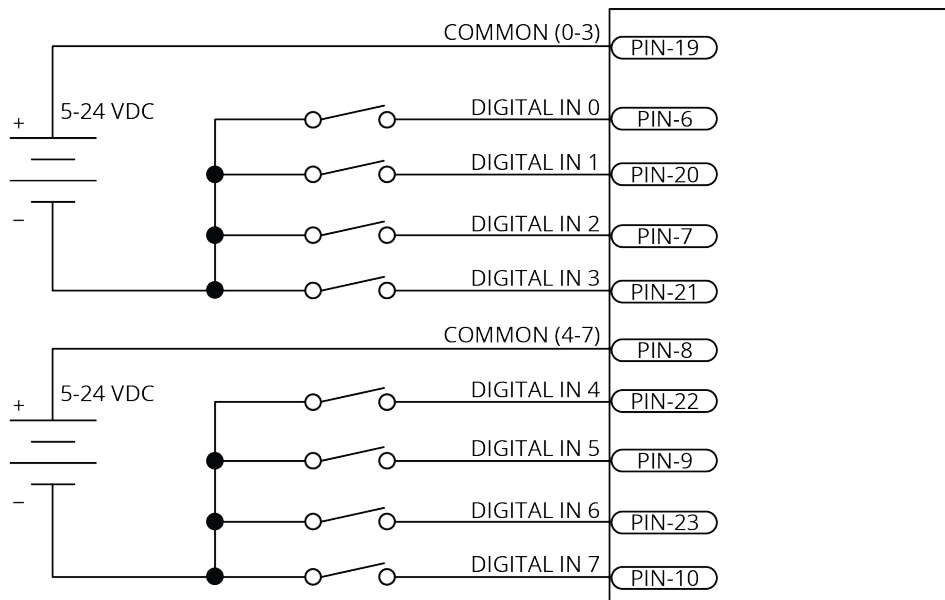


Figure 2-19: Digital Inputs Connected to Current Sinking (NPN) Devices



2.3.3. High-Speed User Input

High-speed input 8 can be used as a general purpose input or as the trigger signal for high speed data collection. Refer to the DriveDataCaptureConfigureTrigger() function topic in the Help file for more information.

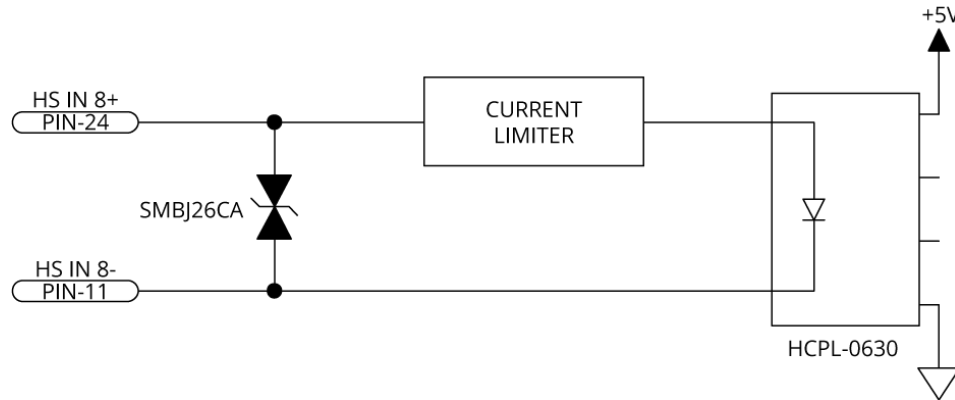
Table 2-21: High-Speed Input Specifications

Specification	Value
Input Voltage	5V - 24 V input voltages
Input Current	10 mA
Input Device	HCPL-0630
Delay	50 nsec

Table 2-22: High-Speed Input Pins on the Digital I/O Connector

Pin #	Description	In/Out/Bi
11	High-Speed Differential Input 8-	Input
24	High-Speed Differential Input 8+	Input

Figure 2-20: High-Speed Input



2.4. HyperWire Interface

The HyperWire bus is the high-speed communications connection from the controller. It operates at 2 gigabits per second. The controller sends all command and configuration information through the HyperWire bus. This device consumes two or four of the available axes of control on the HyperWire communication network. Refer to your Automation1-iSMC license for the number of available HyperWire axes.

HyperWire cables can be safely connected to or disconnected from a HyperWire port while the PC and/or drive is powered on. However, any changes to the HyperWire network topology will disrupt communication and you must reset the controller to re-establish communication.



WARNING: Do not connect or disconnect HyperWire cables while you are loading firmware or damage to the drives may occur.

Table 2-23: HyperWire Card Part Number

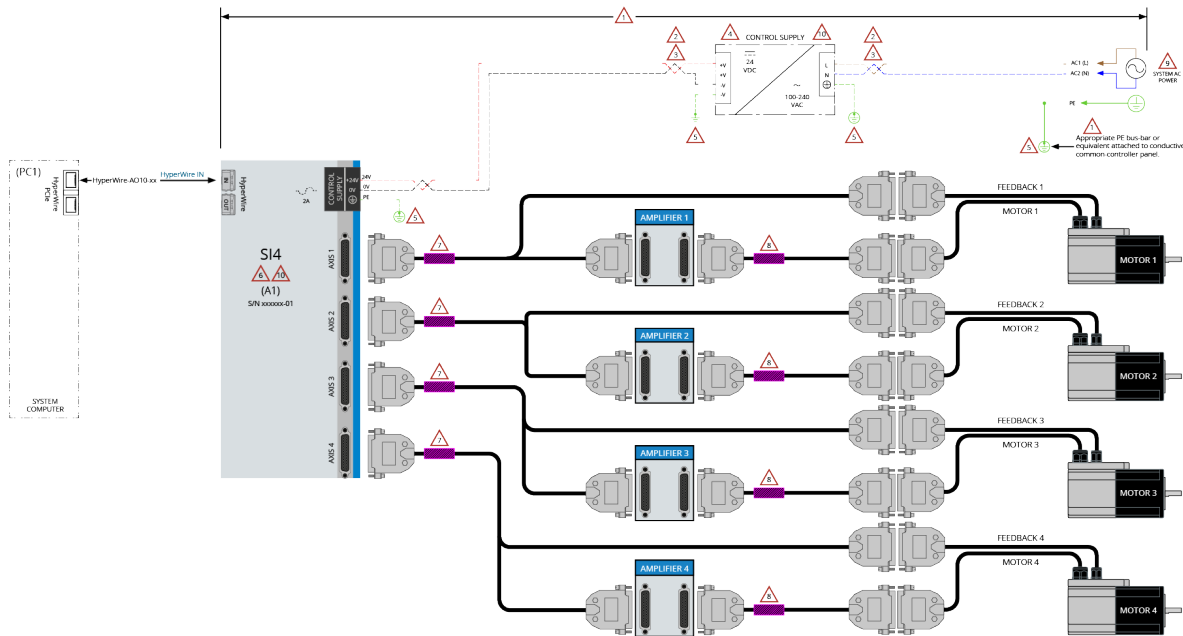
Part Number	Description
HYPERWIRE-PCIE	HyperWire adapter, PCIe x4 interface

Table 2-24: HyperWire Cable Part Numbers

Part Number	Description
HYPERWIRE-AO10-5	HyperWire cable, active optical, 0.5 m
HYPERWIRE-AO10-10	HyperWire cable, active optical, 1.0 m
HYPERWIRE-AO10-30	HyperWire cable, active optical, 3.0 m
HYPERWIRE-AO10-50	HyperWire cable, active optical, 5.0 m
HYPERWIRE-AO10-200	HyperWire cable, active optical, 20.0 m

2.5. System Interconnection

Figure 2-21: Recommended System Connections



! ATTENTION !

The system integrator or end user is responsible for all safety compliance and technical requirements for the system wiring.

IMPORTANT: Read all parts of this manual before you install or operate the SI4 or before you do maintenance to your system.

- To prevent injury to you and damage to the equipment, obey the precautions in this manual.
- If you do not understand the information in this manual, contact Aerotech Global Technical Support.

For EMC performance, mount all system components on to a common **conductive** metal panel.

- Do not use a panel that has a **painted** or **non-conductive** coat applied.
- You can use a panel with a **conductive** surface coat.

System Wiring ROUTING

- Separate VAC and VDC wires
- Separate motor and cable wiring from Control Supply, Low-Voltage I/O, and Control and Feedback signal wires, and VAC/VDC supply wires.

System Wiring SPECIFICATIONS

- Aerotech recommends that you use twisted pair conductors with wire lengths as short as possible.
- Wire Sizes:
 - AC POWER: 1.3 mm² [16 AWG]
 - CONTROL POWER: 0.34 mm² [22 AWG]
- Wire Conformity:
 - North America: UL AWM
 - EU: IEC 60332-1

System Control VDC Power Supply

- Minimum Requirements:
 - Pollution Degree 2
 - Double insulated
 - Short circuit and over-voltage protection
 - UL and CE approvals
- Recommended Power Supply*:
 - 24 VDC Control Supply
 - Mean Well P/N: NDR-75-24 (DIN Rail power supply, 75W 24V 3.2A)
 - * Refer to the Mean Well "NDR Series Installation Manual"

System Protective Earth (PE) grounds

- Keep PE wires as short as possible
- Each PE wire must have a dedicated attach/termination point
- Terminate each PE directly to the grounded component panel (and that the component panel conform to NOTE 1).

SI4 Controller

- Refer to assemblies (A1)
- If the controllers were purchased as an integrated system, refer to the System Interconnections drawing included with the system documentation.

Axis Feedback Cable Ferrite EMC Filters

- Use Aerotech P/N: EC202348 (Fair-Rite P/N: 0446167281) Clamp On filters
- Attach the filter near to the feedback connector back shell as illustrated

Axis Motor Cable Ferrite EMC Filters

- Use Aerotech P/N: EC202367 (Fair-Rite P/N: 2631626402) ferrite cores on motor phase leads.
- Attach the filter near to the A+ and B+ motor output terminals on the amplifier.

System AC Power

- The system AC power must have a fuse or circuit breaker protection
- Voltages and currents are dependent on the selected power supplies and system axis requirements (refer to NOTE 4).

DIN-Rail Mounted Components

- Use DIN Rail from Phoenix P/N: NS 35/ 7,5 PERF 2000MM - 0801733 or equivalent

The information on this page is for reference only and represents best practice applications.

2.6. PC Configuration and Operation Information

For more information about hardware requirements, PC configuration, programming, system operation, and utilities, refer to the Help file.

Chapter 3: Maintenance

In general, you should not have a reason to remove the cover or access the internal components. The SI4 does not have any user-configurable switches or jumpers. Internal fuses are not user-replaceable.



IMPORTANT: For your own safety and for the safety of the equipment:

- Do not remove the cover of the SI4
- Do not attempt to access the internal components.

A fuse that needs to be replaced indicates that there is a more serious problem with the system or setup. Contact Global Technical Support for assistance.

Table 2-25: LED Description

LED	Color	Description
PWR	GREEN	The light will illuminate and remain illuminated while power is applied.
ENB/FLT	GREEN	Any of the axes are Enabled.
	RED	Any of the axes are in a Fault Condition.
	GREEN/RED (alternates)	Any of the axes are Enabled in a Fault Condition. or The light is configured to blink for setup.

Table 2-26: Troubleshooting

Symptom	Possible Cause and Solution
No Communication	Make sure the power LED is illuminated (this indicates that power is present).
	Make sure that all communication cables (HyperWire, for example) are fully inserted in their ports.

3.1. Preventative Maintenance

Do an inspection of the SI4 and the external wiring one time each month. It might be necessary to do more frequent inspections based on:

- The operating conditions of the system.
- How you use the system.

Table 2-27: Preventative Maintenance

Check	Action to be Taken
Examine the chassis for hardware and parts that are damaged or loose. It is not necessary to do an internal inspection unless you think internal damage occurred.	Repair all damaged parts.
Do an inspection of the cooling vents.	Remove all material that collected in the vents.
Examine the work area to make sure there are no fluids and no electrically conductive materials.	Do not let fluids and electrically conductive material go into the chassis.
Examine all cables and connections to make sure they are correct.	Make sure that all connections are correctly attached and not loose. Replace cables that are worn. Replace all broken connectors.

Cleaning



DANGER: Before you clean the SI4, disconnect the electrical power from the drive.

Use a clean, dry, soft cloth to clean the SI4. If necessary, use a cloth that is moist with water or isopropyl alcohol. If you use a moist cloth, make sure that moisture does not go into the controller. Also make sure that it does not go onto the outer connectors and components. Internal contamination from the cleaning solution can cause corrosion and electrical short circuits.

Do not clean the labels with a cleaning solution because it might remove the label information.

Appendix A: Warranty and Field Service

Aerotech, Inc. warrants its products to be free from harmful defects caused by faulty materials or poor workmanship for a minimum period of one year from date of shipment from Aerotech. Aerotech's liability is limited to replacing, repairing or issuing credit, at its option, for any products that are returned by the original purchaser during the warranty period. Aerotech makes no warranty that its products are fit for the use or purpose to which they may be put by the buyer, whether or not such use or purpose has been disclosed to Aerotech in specifications or drawings previously or subsequently provided, or whether or not Aerotech's products are specifically designed and/or manufactured for buyer's use or purpose. Aerotech's liability on any claim for loss or damage arising out of the sale, resale, or use of any of its products shall in no event exceed the selling price of the unit.

THE EXPRESS WARRANTY SET FORTH HEREIN IS IN LIEU OF AND EXCLUDES ALL OTHER WARRANTIES, EXPRESSED OR IMPLIED, BY OPERATION OF LAW OR OTHERWISE. IN NO EVENT SHALL AEROTECH BE LIABLE FOR CONSEQUENTIAL OR SPECIAL DAMAGES.

Return Products Procedure

Claims for shipment damage (evident or concealed) must be filed with the carrier by the buyer. Aerotech must be notified within thirty (30) days of shipment of incorrect material. No product may be returned, whether in warranty or out of warranty, without first obtaining approval from Aerotech. No credit will be given nor repairs made for products returned without such approval. A "Return Materials Authorization (RMA)" number must accompany any returned product(s). The RMA number may be obtained by calling an Aerotech service center or by submitting the appropriate request available on our website (www.aerotech.com). Products must be returned, prepaid, to an Aerotech service center (no C.O.D. or Collect Freight accepted). The status of any product returned later than thirty (30) days after the issuance of a return authorization number will be subject to review.

Visit [Global Technical Support Portal](#) for the location of your nearest Aerotech Service center.

Returned Product Warranty Determination

After Aerotech's examination, warranty or out-of-warranty status will be determined. If upon Aerotech's examination a warranted defect exists, then the product(s) will be repaired at no charge and shipped, prepaid, back to the buyer. If the buyer desires an expedited method of return, the product(s) will be shipped collect. Warranty repairs do not extend the original warranty period.

Fixed Fee Repairs - Products having fixed-fee pricing will require a valid purchase order or credit card particulars before any service work can begin.

All Other Repairs - After Aerotech's evaluation, the buyer shall be notified of the repair cost. At such time the buyer must issue a valid purchase order to cover the cost of the repair and freight, or authorize the product(s) to be shipped back as is, at the buyer's expense. Failure to obtain a purchase order number or approval within thirty (30) days of notification will result in the product(s) being returned as is, at the buyer's expense.

Repair work is warranted for ninety (90) days from date of shipment. Replacement components are warranted for one year from date of shipment.

Rush Service

At times, the buyer may desire to expedite a repair. Regardless of warranty or out-of-warranty status, the buyer must issue a valid purchase order to cover the added rush service cost. Rush service is subject to Aerotech's approval.

On-site Warranty Repair

If an Aerotech product cannot be made functional by telephone assistance or by sending and having the customer install replacement parts, and cannot be returned to the Aerotech service center for repair, and if Aerotech determines the problem could be warranty-related, then the following policy applies:

Aerotech will provide an on-site Field Service Representative in a reasonable amount of time, provided that the customer issues a valid purchase order to Aerotech covering all transportation and subsistence costs. For warranty field repairs, the customer will not be charged for the cost of labor and material. If service is rendered at times other than normal work periods, then special rates apply.

If during the on-site repair it is determined the problem is not warranty related, then the terms and conditions stated in the following "On-Site Non-Warranty Repair" section apply.

On-site Non-Warranty Repair

If any Aerotech product cannot be made functional by telephone assistance or purchased replacement parts, and cannot be returned to the Aerotech service center for repair, then the following field service policy applies:

Aerotech will provide an on-site Field Service Representative in a reasonable amount of time, provided that the customer issues a valid purchase order to Aerotech covering all transportation and subsistence costs and the prevailing labor cost, including travel time, necessary to complete the repair.

Service Locations

<https://www.aerotech.com/contact-sales.aspx?mapState=showMap>

USA, CANADA, MEXICO

Aerotech, Inc.
Global Headquarters

CHINA

Aerotech China
Full-Service Subsidiary

GERMANY

Aerotech Germany
Full-Service Subsidiary

TAIWAN

Aerotech Taiwan
Full-Service Subsidiary

UNITED KINGDOM

Aerotech United Kingdom
Full-Service Subsidiary

Appendix B: Revision History

Revision	Description
1.10	Feature Summary updated (Section 1.1.)
1.09	New Section: Korean Certification
1.08	General Update
1.07	New Section: UKCA Declaration of Conformity
1.06	EU Declaration of Conformity updated
1.05	Revision changes have been archived. If you need a copy of this revision, contact AerotechGlobal Technical Support.
1.04	
1.03	
1.02	
1.01	
1.00	

This page intentionally left blank.

Index

	2		
2014/30/EU	6		
		A	
Absolute Encoder			
BiSS	38		
EnDat	38		
SSI	38		
Absolute Encoder (Axis Connector)	38		
Absolute Encoder Schematic (Axis Connector)	38		
Absolute Encoder Specifications (Feedback Connector)	38		
Altitude	26		
Amplifier Enable Connector Pin on the Axis Connector	35		
Amplifier Enable Output	35		
Amplifier Enable Output Schematic	35		
Amplifier Enable Output Specifications	35		
Amplifier Fault Input Specifications	34		
Axis Connector			
Absolute Encoder	38		
Encoder Inputs	36		
End of Travel Limit Input	32		
Mating Connector Part Numbers	29		
Pinout	29		
Primary Encoder	36		
RS-422 Line Driver Encoder	37		
Square Wave Encoder	37		
Travel Limit Input	32		
Axis Enable Output	35		
		B	
BiSS absolute encoder	38		
		C	
Cables			
HyperWire	48		
cables, examining	52		
Check for fluids or electrically conductive material exposure	52		
Cleaning	52		
Clock and Direction Output Schematic	31		
Clock and Direction Timing	30		
Clock Output Signals	30		
Conducted and Radiated Emissions			6-7
connections, examining			52
Control Supply Connections			27
Control Supply Connector			27
Mating Connector Part Numbers			27
Wiring Specifications			27
Control Supply specifications			18
cooling vents, inspecting			52
Customer order number			11
		D	
Declaration of Conformity			6-7
Digital I/O Connector			
Mating Connector Part Numbers			41
Digital I/O Connector Pinout			41
Digital Input Pins on the Digital I/O Connector			45
Digital Input Specifications			45
Digital Inputs			45
Digital Inputs Connected to a Current Sinking Device			46
Digital Inputs Connected to a Current Sourcing Device			46
Digital Inputs Schematic			45
Digital Output Connector Pinout			42
Digital Output Specifications			42
Digital Outputs			42
Digital Outputs Connected in Current Sinking Mode			44
Digital Outputs Connected in Current Sourcing Mode			44
Digital Outputs Schematic			43
Dimensions			20
Dimensions (2-Axis)			20,22
Dimensions (4-Axis)			21,23
DIN Rail			
Mounting Procedure			24
P/N			
EAM00914			24
DIN Rail Clip Kit			
P/N			
HyperWire-DIN			24
Direction Output Signals			30
Direction Signal Output Polarity			30
Drawing number			11
Drive and Software Compatibility			26
Drive IP Rating			
IP20			19

E			
EAM00914 (DIN Rail Part Number)	24	Outputs Connected in Current Sinking Mode	44
Electrical Specifications	18	Outputs Connected in Current Sourcing Mode	44
Electromagnetic Compatibility (EMC)	6	Square Wave Encoder Schematic (Axis Connector)	37
EMC/CE Compliance	28	fluids, dangerous	52
Enclosure		Functional Diagram	18
IP54 Compliant	19	H	
encoder		Handling	11
absolute	38	High-Speed Input	47
Encoder Input Pins on the Axis Connector	36	High-Speed Input Pins on the Digital I/O Connector	47
Encoder Inputs (Axis Connector)	36	High-Speed Input Specifications	47
Encoder Phasing	39	High-Speed User Input	47
Encoder Phasing Reference Diagram	39	Humidity	26
End of Travel Limit Input (Axis Connector)	32	HyperWire	48
End of Travel Limit Input Connections	32	Cable Part Numbers	48
End of Travel Limit Input Diagnostic Display	33	Card Part Number	48
End of Travel Limit Input Pins on the Axis Connector	32	HyperWire-DIN (DIN Rail Clip Kit Part Number)	24
End of Travel Limit Input Schematic	32	I	
End of Travel Limit Phasing	33	Input Power Connections	27
EnDat absolute encoder	38	inspecting cooling vents	52
Environmental Specifications	26	Inspection	52
EU 2015/863	6	Installation and Configuration	27
examining parts		Installation Overview	12
cables	52	Introduction	15
connections	52	IP20 Drive IP Rating	19
examining, dangerous fluids	52	IP54 Compliant Enclosure	19
examining, dangerous material	52	K	
F		Korean Certification	8
Feature Summary	17	M	
Figure		Maintenance	51
Absolute Encoder Schematic (Axis Connector)	38	material, electrically conductive	52
Control Supply Connections	27	Mating Connector P/N	
Digital Inputs Connected to a Current Sinking Device	46	Axis Connector	29
Digital Inputs Connected to a Current Sourcing Device	46	Control Supply Connector	27
Digital Inputs Schematic	45	Digital I/O Connector	41
Digital Outputs Schematic	43	Mechanical Specifications	19
Dimensions (2-Axis)	20,22	Minimizing Conducted, Radiated, and System Noise for EMC/CE Compliance	28
Dimensions (4-Axis)	21,23	Modes of Operation	18
End of Travel Limit Input Connections	32	Mounting and Cooling	19
End of Travel Limit Input Diagnostic Display	33		
End of Travel Limit Input Schematic	32		
High-Speed Input	47		

This page intentionally left blank.